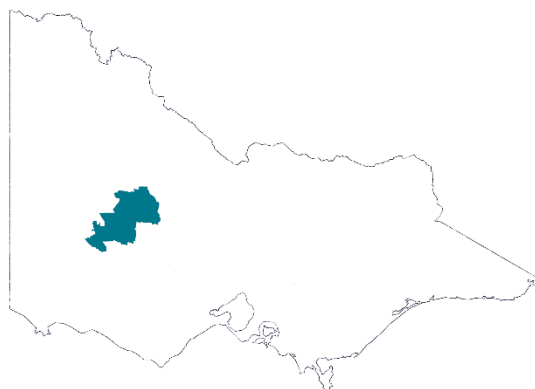


Municipal Emergency Management Planning

Northern Grampians Shire



Municipal Fire Management Plan 2023-2026

Version 4.2, August 2025

Amendment history

| Version | Date | Author(s) | Description of Change |
|-------------|-------------|---|---|
| Version 1.0 | 20/10/2011 | NGS MFMPC | Adoption of Version 1.0. |
| Version 1.1 | 25/11/2011 | J Annear | Updated to reflect amended legislation around the '10/50 Rule' and the Bushfire Management Overlay. |
| Version 1.2 | 28/01/2016 | NGS MFMPC | Extension of the period of the MFMP for a further 18 months to 30/06/2016. |
| Version 2.0 | 04/07/2016 | NGS MFMPC J Matthews (MFPO) | Prepared for the 2016-19 period and adopted by Council. |
| Version 3.0 | July 2019 | NGS MFMPC K Boladeras (MFPO) | General update with structural changes. Prepared for the 2019-22 period. |
| Version 3.1 | June 2020 | NGS MFMPC K Boladeras (MFPO) | General update. |
| Version 3.2 | May 2021 | NGS MFMPC K Boladeras (MFPO) | General update. |
| Version 4.0 | June 2023 | NGS MFMPC Kelly Boladeras (MFPO) Tony Miles (Commander D16) | Plan rewritten to align with changes under the <i>Emergency Management Legislation Amendment Act 2018</i> . |
| Version 4.1 | Sept 2023 | Kelly Boladeras (MFPO) | Minor amendment – change of Bushfire Place of Last Resort location in Halls Gap. |
| Version 4.2 | August 2025 | Kelly Boladeras (MFPO); Joshua Hodges (CFA VMO); Tony Miles (CFA D16 Commander) | Minor updates, including CFA Brigade Works List in Appendix D2 Strategic Fire Breaks Table and change of 'Code Red' Fire Danger Rating to 'Catastrophic'. |

Contents

| | |
|--|----|
| Amendment history | 2 |
| 1. Introduction | 5 |
| 1.1 Acknowledgement of Country | 5 |
| 1.2 Plan context..... | 5 |
| 1.3 Authority | 5 |
| 1.4 Plan assurance and approval | 6 |
| 1.5 Plan review | 6 |
| 1.6 Plan audience, aim and objectives..... | 6 |
| 1.6.1 Strategic direction | 7 |
| 1.7 Northern Grampians Shire Municipal Fire Management Planning Committee..... | 8 |
| 1.7.1 Membership of the NGS MFMP | 8 |
| 1.7.2 Role of the NGS MFMP | 8 |
| 2. Engagement and communications | 8 |
| 2.1 Communications objectives | 8 |
| 2.2 Stakeholder engagement and participation..... | 8 |
| 3. Environmental profile | 9 |
| 3.1 Municipal map | 9 |
| 3.2 Climate and bushfire season | 11 |
| 3.3 History of fire and ignition causes | 11 |
| 3.4 Future fire management implications | 11 |
| 4. Fire risk management strategies | 12 |
| 4.1 Risk assessment methodologies..... | 12 |
| 4.1.1 Analysis and prioritisation of municipal bushfire risk | 12 |
| 4.1.2 Alignment to regional objectives | 12 |
| 4.1.3 Treatment of municipal bushfire risk | 13 |
| 4.1.4 Analysis and prioritisation of structure fire risk | 14 |
| 4.1.5 Future objectives | 14 |
| 4.1.6 Treatment of municipal structure fire risk | 16 |
| 4.2 Localised community information..... | 16 |
| 4.3 Bushfire Places of Last Resort..... | 16 |
| 4.4 Strategic fire break definitions..... | 17 |
| 4.4.1 Strategic Fire Suppression Lines | 17 |
| 4.4.2 Fire Control Lines | 17 |

| | | |
|--|--|----|
| 4.4.3 | Priority Egress / Access Roads (PEAR)..... | 17 |
| 4.4.4 | General Egress / Access Roads (GEAR)..... | 17 |
| 4.4.5 | CFA Brigade Fire Prevention Works | 17 |
| 4.5 | Community fire refuges..... | 17 |
| 4.6 | Individual bushfire risk treatments..... | 18 |
| 4.6.1 | Vegetation management rights | 18 |
| 4.6.2 | Permits to burn under the CFA Act | 18 |
| 4.6.3 | Permits to burn under council Local Laws..... | 18 |
| 4.6.4 | Inspection of private properties and issue of notices..... | 19 |
| 4.6.5 | Planning permits..... | 19 |
| 4.7 | Cross boundary arrangements | 19 |
| Appendices..... | | 21 |
| Appendix A – Acronyms | | 21 |
| Appendix B – Agency work plans | | 22 |
| Appendix C – VFRR-B Review | | 23 |
| Appendix D – Strategic fire breaks map and table..... | | 30 |
| Appendix E – MFMP Terms of Reference..... | | 40 |
| Appendix F – Stakeholder Analysis & Communications & Engagement Plan | | 44 |
| Appendix G – Bushfire risk treatments | | 48 |
| Appendix H – Structure fire risk treatments | | 51 |

1. Introduction

1.1 Acknowledgement of Country

The Northern Grampians Shire (NGS) Municipal Fire Management Planning Committee (MFMPC) acknowledges the Traditional Owners and other Aboriginal and Torres Strait Islander peoples across the Northern Grampians municipality and pays respect to Elders, past and present. Today, the municipality coincides with multiple, diverse Traditional Owner groups, including the Wotjobaluk, Jaadwa, Jadawadjali, Wergaia, Jupagulk and Dja Dja Wurrung peoples. This plan acknowledges the important role of Traditional Owners of this Country.

1.2 Plan context

This Municipal Fire Management Plan (MFMP) has been developed under legislation introduced in Victoria in 2018 to provide greater cohesion through integrated arrangements for emergency management planning in Victoria at the state, regional and municipal levels.

This plan is prepared and maintained as a sub-plan to the Municipal Emergency Management Plan (MEMP) to ensure that the linkages across fire prevention, preparedness, response and recovery programs are consistent and holistic.

This plan has been developed in line with the:

- [Emergency Management Act 2013](#) (the Act) which provides the authority under which Municipal Emergency Management Planning Committees (MEMPC) operate
- Ministerial Guidelines for Preparing State, Regional and Municipal Emergency Management Plans
- State Fire Management Planning Guidance to Regional and Municipal Fire Management Planning Committees.

This plan does not intend to override or contradict local government or individual agency plans, or legislated responsibilities of any individual agency. It is designed to complement and enhance planning undertaken at a Regional and State level within emergency management arrangements.

This plan takes an integrated approach across agencies and partners to the identification and management of fire risks within the municipality. It recognises the shared responsibility between government, agencies, business and community in reducing those risks.

1.3 Authority

In 2020, the [Emergency Management Legislation Amendment Act 2018](#) amended the [Emergency Management Act 2013](#) (the Act) to provide for new integrated arrangements for emergency management planning in Victoria at the state, regional and municipal levels. It created an obligation for a MEMPC to be established in each of the municipal districts of Victoria. Each MEMPC is a multi-agency collaboration group whose members bring organisation, industry, or personal expertise to the task of emergency management planning for the municipal district.

This plan has been prepared in accordance, and complies, with the requirements of the [Act](#) including having regard to the guidelines issued under s77, [Guidelines for Preparing State, Regional and Municipal Emergency Management Plans](#).

1.4 Plan assurance and approval

This plan has been written and endorsed by the NGS MFMP on 28 June 2023 and assured by the NGS MEMPC on 4 August 2023. A Statement of Assurance, including a checklist and certificate, was prepared and submitted to the Grampians Regional Emergency Management Planning Committee (REMPC) pursuant to the Act (s60AG).

This Plan comes into effect on date of signed approval and remains in effect until superseded by an approved and published update. Recipients should remove superseded versions from circulation.

1.5 Plan review

The MFMP acknowledges that at the time of reviewing this plan, a new MFMP template was provided by the Country Fire Authority (CFA). This version of the NGS MFMP does not reflect the changes in the new template. However, the MFMP is committed to working collaboratively towards further improvements to this plan including consideration of the new template.

To ensure the plan provides for a current integrated, coordinated, and comprehensive approach to emergency management and is effective, it is to be reviewed at least every three years or as required.

MFMP member agencies and organisations will have the opportunity to participate in relevant emergency exercises during the three-year plan review period.

Urgent update of this plan is permitted if there is significant risk that life or property will be endangered if the plan is not updated (the Act s60AM). Urgent updates come into effect when published on the municipal council website and remain in force for a maximum period of three months.

Administrative updates will be made to this plan from time to time that will be noted in the [Amendment history](#). Administrative amendments do not substantially change the content or intent of this plan, and do not require the Plan to be endorsed by the MEMPC.

This plan is available on council's website: www.ngshire.vic.gov.au.

All comments regarding this plan should be forwarded to:

MEMPC Chair
Northern Grampians Shire Council
PO Box 580
Stawell Vic 3380

1.6 Plan audience, aim and objectives

The NGS MFMP is intended for the use of the members of the NGS MFMP, NGS MEMPC and the Grampians REMPC.

This plan takes an integrated approach across agencies and partners to the identification and management of fire risks within the municipality. It recognises the shared responsibility between government, agencies, business, and community in reducing those risks.

The NGS MFMP seeks to achieve consistent and effective fire management planning within the municipality through commitment and cooperation, including sharing and building of collective knowledge and experience at municipal and regional levels.

The primary aim of the MFMP is to create greater community awareness and communicate fire management information more effectively. Ultimately, the community will share responsibility for implementing the strategies contained within the plan and create a safer municipality through undertaking the following tasks.

- Ensure that plans and actions are in place (and that responsible authorities are advised of actions which the Committee deems necessary) for minimising the risk of an outbreak of fire or for suppressing any fire that may occur within the area (*Section 55 of the [CFA Act 1958](#)*).
- Develop programs that are relevant to the community.
- Measure fire safety outputs to assess the reduction in community vulnerability to fire.
- Engage community groups and businesses in ongoing dialogue about fire mitigation solutions including fire prevention activities.
- Liaise with other agencies and committees to ensure integration and consistency of purpose.

The primary objectives of the NGS MFMP are to:

- Effectively manage and reduce the risk of fire, with a view to protecting life and property and with due regard to our natural environment; and
- Align and integrate existing fire management planning and practices across agencies and the community.

The NGS MFMP is a strategic and operational document that identifies communities and assets at risk through an Environmental Risk Scan incorporating the existing NGS MFMP and MEMP, using the Victorian Fire Risk Register (VFRR) tool to identify assets at risk from bushfire and treatments currently applied to mitigate risk.

1.6.1 Strategic direction

This plan addresses both public and private land across all emergency management phases. The MFMP will be reviewed and updated annually to ensure it incorporates any new strategies, programs and tools developed to meet the needs and expectations of agencies, organisations, and the community. Adopting the principles of continuous improvement, the strategic direction of the MFMP aligns directly to the State Emergency Management Plan – Bushfire Sub-Plan (2021) which articulates the following guiding principles.

- Leadership
- Protection of human life
- Responsibility for building resilience
- Community involvement
- A seamless approach
- Risk-driven
- Learning and knowledge

1.7 Northern Grampians Shire Municipal Fire Management Planning Committee

1.7.1 Membership of the NGS MFMP

Core membership of the NGS MFMP, as appointed by the MEMPC, comprises representatives from the following key agencies and organisations as per the Committee's Terms of Reference ([Appendix E](#)).

- Northern Grampians Shire Council (NGSC)
- Country Fire Authority (CFA)
- Forest Fire Management Victoria (FFMV)
- Victoria Police
- Department of Transport (DOT)
- Grampians Wimmera Mallee Water (GWMWater)

1.7.2 Role of the NGS MFMP

The role of the Committee, along with developing the MFMP, is to provide a local level forum to build and sustain organisational partnerships, generate a common understanding and shared purpose with regard to fire management, ensure that the plans of individual agencies are linked and complement each other, and to collectively achieve a reduction in fire risk to the municipal community. For more detail on the functions of the NGS MFMP, refer to the Committee's Terms of Reference ([Appendix E](#)).

2. Engagement and communications

2.1 Communications objectives

The achievement of fire management objectives and the success of fire management outcomes will be dependent on effective communications in all planning and implementation phases. The objectives of the communications plan will be to:

- Build a collaborative approach to integrated fire management
- Identify internal communication flows within organisations
- Ensure that communication across agencies is effective in developing a shared understanding of the issues and key responsibilities and that all agencies deliver a consistent message to the community and their stakeholders
- Build resilient relationships and sound networks between key stakeholders
- Consult with communities so that local knowledge is captured in the planning process that the communications plan supports
- Foster better communication and planning between the agencies and local communities
- Achieve greater consistency from all levels of government on key policy issues.

2.2 Stakeholder engagement and participation

Stakeholder engagement and participation is an essential element of fire management planning. Stakeholders are required to participate for a range of reasons, including (but not limited to):

- Legislative fire management responsibilities
- Leadership
- Provision of hazard expertise and technical advice
- Subject to hazard impact – directly and/or indirectly
- Land tenure and management arrangements
- Expressed expectation
- Influence and / or support mitigation.

The aim is for all stakeholders to participate in the collaborative development, delivery, and monitoring of the MFMP. Engaging with stakeholders in the development and implementation of the MFMP is an essential tool for drawing on existing knowledge and experience and to build support for and involvement in this plan.

Communication and engagement tasks are guided by the International Association for Public Participation (IAP2) Public Engagement Spectrum (Figure 1), which is a framework for planning effective communication and engagement on any issue or plan.

| Inform | Consult | Involve | Collaborate | Empower |
|--|---|--|---|--|
| Provide balanced information to stakeholders | Obtain feedback on analysis and decisions | Work directly together to ensure issues are understood | Partner in each aspect of decision making | Place final decision making in the hands of primary stakeholders |

Figure 1 The IAP2 Public Engagement Spectrum

To support this plan, a Stakeholder Analysis and Communications and Engagement Plan have been developed and are included in [Appendix F](#).

3. Environmental profile

3.1 Municipal map

The Northern Grampians Shire lies northeast of the Grampians National Park (Gariwerd), between the cities of Ballarat, Bendigo and Horsham. The municipality covers an area of 5,918 square kilometres.

Council’s public [mapping portal](#) provides information on emergency services, bus routes, and vulnerable facilities. Council’s internal map layers can also provide locations of strategic fire breaks, hydrants, and tanks. Mapping is available through the Municipal Emergency Management Officer. The map below (Figure 3) details the municipal area.

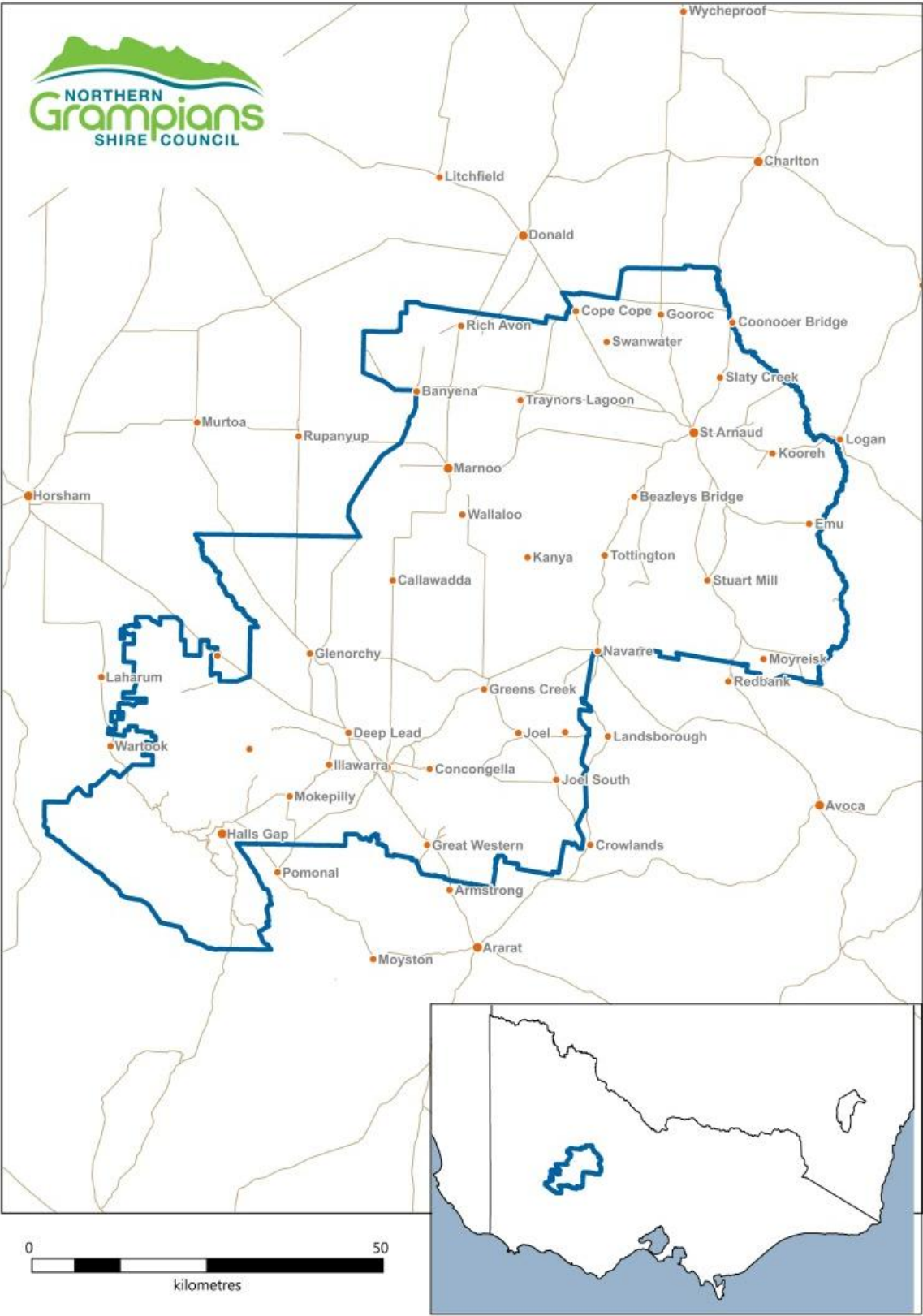


Figure 2: NGS municipal map.

3.2 Climate and bushfire season

The climate in the Grampians region is dominated by warm dry summers and cool wet winters, with most rainfall occurring in winter and spring. The bushfire season generally runs from December to April.

Prevailing weather conditions associated with the bushfire season in the Northern Grampians Shire are warm to hot north westerly winds accompanied by high temperatures and low relative humidity followed by a cool south westerly change.

[Climate change projections](#) for the Grampians region include harsher fire weather and longer fire seasons. Fire weather is a measure of fuel dryness and hot, dry, windy conditions. An increase in frequency of very high and extreme fire danger days is projected.

The impacts of climate change need to be continually monitored and the MFMP reviewed accordingly to ensure that seasonal fire risk is addressed appropriately.

3.3 History of fire and ignition causes

Historically, Northern Grampians Shire experiences a major fire once every five to ten years. This is partially due to the municipality being situated in a known lightning belt and agricultural activities including stubble burning practices. Often ignitions occur in remote and difficult to access terrain, allowing the fire to gain momentum. A complete list of major bushfires which have occurred in the last 10 years, or which have provided significant learning, can be found in the NGS MEMP.

Aging buildings, buildings with shared roof space, and elderly housing stock present a higher fire risk to occupants and residents due to the nature of their construction and the materials used.

Major interstate and national transport links traverse the municipality. These have led to the ignition of fires from transport accidents and malfunctions. This characteristic also presents a major risk for hazardous material incidents.

3.4 Future fire management implications

Future vulnerabilities include increased larger landholdings managed by consortiums and serviced by contractors, leading to declining populations in broadacre cropping areas. This demographic combined with an aging population has seen previously robust rural communities relocate to more populated centres. This shift in population could potentially lead to delayed suppression activities in rural areas.

The installation of the Bulgana Green Power Hub wind farm east of Stawell presents an additional potential source of fire risk. The wind farm is also a large asset requiring protection which would impact local resources in the event of a fire.

An emerging trend in line with the green movement is the introduction of Electric Vehicles (EVs) globally. In Victoria, the Government has set a Zero Emission Vehicle target that by 2030, 50% of all new light vehicle sales will be EV's. This could have implications in the Fire Management Sector with a dramatic increase in Lithium Ion (Li ion) battery use, charging stations in residential premises and outside commercial ventures. Li ion battery fires are an emerging risk to fire response agencies and with a main transportation highway running through the shire, it would be expected that EV fires may occur.

A further push is being made to increase the number of solar panels and Battery Energy Storage Systems (BESS) in residential properties. The bulk installation of li ion batteries to store energy presents new challenges to fire managers.

An increase in individuals purchasing land for rest and relaxation purposes has resulted in more absentee landowners, particularly in the Halls Gap area. These landowners traditionally have less knowledge of fuel and fire management requirements, little engagement with the community, and live externally to the municipality. This limits their capacity and ability to undertake regular fuel management work and participate in local community networks.

Changes in the use of controlled fire management practices on public land may lead to changes in vegetation characteristics and its dependence on fire.

Large, privately owned areas of remnant vegetation present additional fire management challenges as the owners may not have the capacity to undertake appropriate fuel management works for a variety of reasons, including access to knowledge and resources and legislative constraints.

Enforcement of compliance also presents complexities in terms of cost recovery and allocation of resources for management agencies.

4. Fire risk management strategies

4.1 Risk assessment methodologies

4.1.1 Analysis and prioritisation of municipal bushfire risk

To determine the bushfire risk within NGS, assessment was undertaken using the environments contained within the VFRR process. The VFRR application is a systematic process that identifies assets at risk from bushfire and assesses their level of risk on a consistent state-wide basis using ISO 31000:2009 Risk Management. The VFRR data provided the starting point to assess the effectiveness of existing treatments and determine residual risk levels for the purpose of developing further mitigation treatments as required.

4.1.2 Alignment to regional objectives

The plan also references treatments for the six priority risks in relation to bushfire as determined by the Grampians Regional Strategic Fire Management Plan (RSFMP) using the VFRR risk assessment process (Table 1). These are aligned to the asset classes and subclasses contained within the VFRR tool (administered by the CFA).

Table 1 Bushfire Priority and VFRR Asset Classes and Subclasses

| Bushfire | | |
|--------------------------|------------------|---|
| Grampians RSFMP Priority | VFRR Asset Class | VFRR Asset Subclass/es |
| 1. Urban Interface | Human Settlement | <ul style="list-style-type: none"> Residential Other Special Fire Protection |
| 2. Power Supply | Economic | <ul style="list-style-type: none"> Agriculture |

| | | |
|---|-------------------|---|
| 3. Communications 4. Water Supplies & Catchments 5. Transport | | <ul style="list-style-type: none"> • Commercial • Infrastructure • Tourist & recreational • Mines • Commercial forests • Water catchments |
| | Environmental | <ul style="list-style-type: none"> • Locally Important • Endangered • Vulnerable |
| 6. Natural Environment | Cultural Heritage | <ul style="list-style-type: none"> • Aboriginal Significance • Non-Indigenous |

4.1.3 Treatment of municipal bushfire risk

In developing this plan, the MFMP has considered the State strategic control priorities as the municipal fire management priorities. They are:

- Protection and preservation of life is paramount - this includes safety of emergency services personnel, and safety of community members including vulnerable community members and visitors/tourists located within the incident area.
- Issuing community information and community warnings detailing incident information that is timely, relevant, and tailored to assist community members make informed decisions about their safety.
- Protection of critical infrastructure and community assets that supports community resilience.
- Protection of residential property as a place of primary residence.
- Protection of assets supporting individual livelihoods and economic production that supports individual and community financial sustainability.
- Protection of environmental and conservation values that considers the cultural, biodiversity, and social values of the environment.

Following the State strategic control priorities, the MFMP aims to reduce the number and severity of fires within the municipality with the intent of creating a more fire resilient community.

The State strategic control priorities inform and are integrated into the primary fire risk management strategies used in this plan, which are as follows.

- Community education and engagement.
- Hazard reduction.
- Preparedness.
- Regulatory controls.

There are several state-wide and municipal treatments that have been identified for each fire risk management strategy, which can be used by agencies to reduce the risk and effects of fire on the community. The generic state-wide and municipal wide treatments include the following.

- Community education programs.

- Community education and engagement activities.
- Public awareness – multimedia communications.
- Powerline hazard tree identification, management, and reporting.
- Fire hazard inspection program and issue of notice.
- Compliance and enforcement of legislation.
- Bushfire Management Overlays.
- Building Code of Australia.
- Permits to Burn.
- Local Laws.

To effectively reduce community vulnerability to fire requires more than inter-agency effort alone. It requires the facilitation of a more self-reliant and self-aware community who have the knowledge, motivation and capacity to manage the risks to reduce the threat of fire in their own communities as an active partner with fire management agencies.

The key objectives and outcomes sought through the implementation of the primary fire risk management strategies for bushfire are outlined in [Appendix G](#).

In addition, there are a range of site-specific plans to reduce specific risks within the municipality that are required by other legislation.

4.1.4 Analysis and prioritisation of structure fire risk

The definition of structure fire is any uncontrolled fire inside, on, under or touching a building or structure that needs to be extinguished.

This Plan recognises that there is currently no Risk Assessment Tool for structure fires. Once an appropriate Risk Assessment Tool has been developed (at state level), this will be implemented by the MFMP to complete and incorporate a full Risk Register for structure fires in later iterations of this Plan.

Risk assessment will consider likelihood factors, such as structural fire history (number and type) across the municipality and across the relevant industry, and the consequences, or potential consequences of those occurrences (death, injury, economic and property loss statistics).

Consideration will also be given to high-risk premises and assets. Examples of high-risk premises may include (for life risk) nursing homes, aged care facilities and institutional care facilities, (and for property loss risk) commercial and industrial premises.

4.1.5 Future objectives

Priority risks for structure fires within NGS have mostly been defined. The tables below identify possible Asset Sub Classes aligned to the VFRR Asset Classes which would need to be considered in the development of future risk assessment tools for these risk environments (Tables 6 & 7).

Structural assets have not yet been assessed or prioritised. Additionally, current treatments for these structure risks are yet to be identified.

Table 2 Proposed Structure Fire Asset Sub Classes

| Structure Fire | | |
|--|-------------------|--|
| Grampians RSFMP Priority | VFRR Asset Class | Proposed Asset Subclass/es |
| 1. Houses 2. Accommodation 3. Places of public gathering 4. Infirm, assisted living | Human Settlement | <ul style="list-style-type: none"> Residential <ul style="list-style-type: none"> High density Urban Interface living Rural Short term accommodation Public Assembly <ul style="list-style-type: none"> Entertainment & leisure venues Institutions Healthcare <ul style="list-style-type: none"> Hospitals & medical centres Nursing homes Special care accommodation Day care centres Hostels/hospices |
| 5. Retail 6. Commercial businesses 7. Industrial 8. Infrastructure | Economic | <ul style="list-style-type: none"> Commercial & industrial <ul style="list-style-type: none"> Business centres Shopping centres Industrial complexes Agricultural & farming Transport <ul style="list-style-type: none"> Road Rail Marine Air |
| To be defined | Environmental | <ul style="list-style-type: none"> Eco tourism venues Flora parks & reserves Fauna parks & reserves |
| 9. Buildings of significant heritage or cultural value | Cultural Heritage | <ul style="list-style-type: none"> Indigenous structures Heritage listed structures Locally significant structures |

4.1.6 Treatment of municipal structure fire risk

The key objectives and outcomes sought through the implementation of the primary fire risk management strategies for structure fires are outlined in [Appendix H](#).

4.2 Localised community information

Community Information Guides were developed in response to the Victorian Bushfire Royal Commission as a tool to support councils with local bushfire planning for communities at risk. With changing communities and needs the CFA has modernised this resource and the information is now available online as part of CFA Local: <https://www.cfa.vic.gov.au/home/local-information>.

Local information includes the details of all Bushfire Places of Last Resort (BPLRs) (also known as Neighbourhood Safer Places) within the map area; any planned CFA events: the local government area; CFA Brigade; a 4-day Fire Danger Rating forecast; Total Fire Ban information; Community meetings planned; and links to additional information.

In September 2022, the new Australian Fire Danger Rating System was implemented to achieve a simplified and nationally consistent system. The new Fire Danger Ratings are shown below. The CFA website contains information regarding the new system: www.cfa.vic.gov.au.

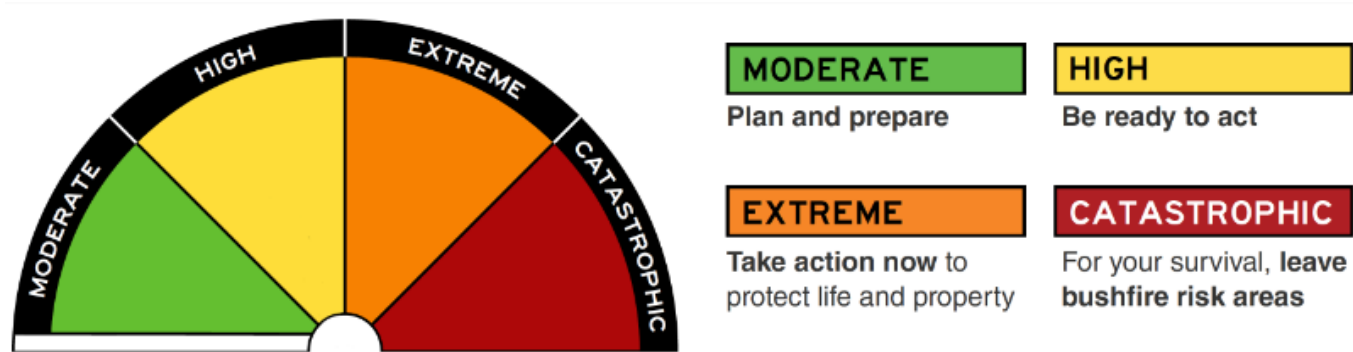


Figure 3 The Australian Fire Danger Rating System.

4.3 Bushfire Places of Last Resort

Bushfire Places of Last Resort (BPLRs) are council designated locations within the community that may provide some protection from a bushfire, but do not guarantee safety. BPLRs are existing locations and not purpose-built fireproof structures.

BPLRs are not designed to replace a personal bushfire survival plan. BPLRs may assist people when there is an imminent threat of bushfire and they have no plan, or their planned options are not possible.

They are *not* locations to relocate to when leaving early. On days when there is advice to leave early people should relocate to an appropriately distant area of lower risk as early as possible.

BPLR sites are nominated by the council and assessed annually by CFA for suitability. Northern Grampians Shire BPLRs are located at the following sites.

- Stawell - Cato Park, Victoria Street (opposite Haitts Lane)
- St Arnaud - Lord Nelson Park Oval, Dunstan Street (off Charlton-St Arnaud Road)
- Halls Gap - Halls Gap Picnic Reserve, Grampians Road (opposite petrol station)

These locations can be viewed on council's [Community Map](#).

4.4 Strategic fire break definitions

4.4.1 Strategic Fire Suppression Lines

Vegetation managed from fence line to fence line where practicable. Grass will be slashed to a height of 100mm or less, and elevated fine fuels will not surpass a 'high' fuel hazard rating as assessed in the Victorian Government's [Overall Fuel Hazard Assessment Guide 2010](#).

4.4.2 Fire Control Lines

Vegetation managed 3 metres behind the guideposts where practicable. Vegetation will be slashed to a height of 100mm or less.

4.4.3 Priority Egress / Access Roads (PEAR)

The primary function of PEAR will be to determine what treatments are required along the nominated road to maintain access and egress to an isolated community prior to or after a bushfire event. All priority roads in the municipality will be assessed and treated in accordance with the Victorian Government's [Road Bushfire Risk Assessment Guideline 2013](#).

4.4.4 General Egress / Access Roads (GEAR)

These roads are deemed important for emergency vehicles and community access and egress during a fire. The treatment for a GEAR is the same as for a Fire Control Line.

4.4.5 CFA Brigade Fire Prevention Works

Brigade works may enhance Strategic Fire Suppression Lines and Fire Control Lines however, the implementation is not compulsory and will be subject to seasonal conditions and Brigade resource availability.

4.5 Community fire refuges

Community Fire Refuges are purpose-built or modified buildings that provide protection from radiant heat and embers. They are designed to be a last resort option where nearby residents or visitors can seek shelter if they are trapped by a significant fire.

There are no designated Community Fire Refuges in the Northern Grampians Shire. For information on the location of Community Fire Refuges in Victoria, go to the [CFA website](#).

4.6 Individual bushfire risk treatments

4.6.1 Vegetation management rights

In November 2011, the Victorian Government introduced permanent planning controls as part of implementing the recommendations of the Victorian Bushfire Royal Commission.

In December 2017, the Victorian Government introduced changes to the Native Vegetation controls under Clause 52.17 of the Planning Scheme.

Planning permit exemptions for 'Fire Protection' have been included in Victoria's planning schemes to enable residents to manage vegetation for bushfire protection around their property.

Other exemptions to assist the landowner include the following.

- Fencing - (minimum extent necessary) for the operation or maintenance of an existing fence, or the construction of a boundary fence between properties in different ownership (with consent from the neighbouring landowner).
- Existing buildings - (minimum extent necessary) for the maintenance of a building but does NOT apply to native vegetation more than 10m from a building and does NOT apply to a property which has the Vegetation Protection Overlay control.
- Emergency works - in the case of an emergency by, or on behalf of, a public authority or municipal council to create an emergency access associated with emergency works; or where it presents an immediate risk of personal injury or damage to property. Only that part of the vegetation that presents the immediate risk may be removed, destroyed, or lopped under this exemption.

To determine if you need a planning permit for native vegetation removal, please contact the planning department. To determine if your property is within the Bushfire Management Overlay, visit <https://www2.delwp.vic.gov.au/maps/maps-and-spatial-data>.

4.6.2 Permits to burn under the CFA Act

During the declared Fire Danger Period, limited permits may be obtained by individuals to conduct a fuel reduction or stubble burn within the municipality. These permits are issued by the CFA (District 16) under the authority of the [CFA Act 1958](#). These permits contain stringent conditions that must be complied with. Refer to [Fire Permits | CFA \(Country Fire Authority\)](#)

4.6.3 Permits to burn under council Local Laws

Under council's General Local Law 2022, outside the declared Fire Danger Period, within a residential, commercial or industrial area a person must not, without a permit, burn in the open air any material, substance or thing in a heap that exceeds the size of 1 cubic metre. A permit is not required if the fire is being used for heating, cooking, cultural or social purposes, or if it is generated by a tool of trade while being used for the purpose for which it was designed.

4.6.4 Inspection of private properties and issue of notices

The NGSC will conduct fire hazard inspections within the municipality, concentrating on high-risk areas. Fire prevention notices will be issued on land considered to be a fire risk as soon as practicable after the declaration of the Fire Danger Period.

4.6.5 Planning permits

When applications are lodged with NGSC for permits under the *Planning and Environment Act 1987* for the subdivision of land or the construction of buildings in areas of high fire risk, council may consider the following documents in determining any such application and refer the application to the relevant fire agencies for comment.

- Northern Grampians Planning Scheme - State and Local Planning Policies.
- Clause 44.06 Bushfire Management Overlay.
- Clause 52.07 Bushfire Recovery.
- Clause 52.10 Reconstruction After an Emergency.
- Clause 52.12 Bushfire Protection – Exemptions.
- Clause 52.14 2009 Bushfire - Replacement Buildings.
- Clause 53.02 Bushfire Planning.
- State Govt (Planning) website - Bushfire Management Overlay.
- CFA website - Planning and Bushfire Management Overlay.
- Other documentation if required.

For further information on any of the above, please contact council's Planning department.

4.7 Cross boundary arrangements

The NGS MFMP seeks to ensure risk environments that cross municipal and regional boundaries are treated in a seamless manner with regard to risk assessment and treatments. This is achieved through a collaborative approach and the use of consistent processes and tools.

The Northern Grampians municipal area borders Buloke, Central Goldfields, Horsham Rural City, Pyrenees, Ararat Rural City, Southern Grampians and Yarriambiack Shires. It is the shared responsibility of these MFMPs to ensure that risks contiguous across these borders are consistently planned for.

Clear links to existing organisational cross-boundary agreements and Memorandums of Understanding (MOU) between agencies dealing with preparedness, preparation, response and recovery activities and resource allocation arrangements are also vital.

Current identified cross boundary and contiguous risk from bushfire for the NGS municipal area includes:

Table 3 Northern Grampians Shire cross boundary risks.

| Risk | Adjacent Municipality | Strategy |
|-------------------------|---|---|
| Grampians National Park | Ararat Rural City, Horsham Rural City, Southern Grampians Shire | Ensure alignment of planning and prevention activities in relation to these risks are |

| | | |
|---|-------------------|--|
| Ararat Regional Park (Dunneworthy Block) | Ararat Rural City | discussed and coordinated with relevant municipalities. Ensure that these arrangements and plans are included in relevant MFMPs. |
| Kara Kara National Park | Pyrenees Shire | |

It is also recognised that agencies and municipalities have existing planning relationships across multiple boundaries and that these planning arrangements need to be considered when developing future plans.

Appendices

Appendix A – Acronyms

| | |
|----------|--|
| ARTC | Australian Rail Track Corporation |
| AV | Ambulance Victoria |
| BESS | Battery Energy Storage System |
| BPLR | Bushfire Place of Last Resort |
| CFA | Country Fire Authority |
| DEECA | Department of Energy, Environment & Climate Action |
| DET | Department of Education & Training |
| DFFH | Department of Families, Fairness & Housing |
| DoH | Department of Health |
| DOT | Department of Transport |
| EPA | Environment Protection Authority |
| ERV | Emergency Recovery Victoria |
| EMV | Emergency Management Victoria |
| EV | Electric Vehicle |
| FFMV | Forest Fire Management Victoria |
| GEAR | General Access / Egress Road |
| GWMWater | Grampians Wimmera Mallee Water |
| IAP2 | International Association for Public Participation |
| MEMP | Municipal Emergency Management Plan |
| MEMPC | Municipal Emergency Management Planning Committee |
| MFMP | Municipal Fire Management Plan |
| MFMPC | Municipal Fire Management Planning Committee |
| MFPO | Municipal Fire Prevention Officer |
| NGS | Northern Grampians Shire |
| NGSC | Northern Grampians Shire Council |
| PEAR | Priority Egress / Access Road |
| RDV | Regional Development Victoria |
| REMPC | Regional Emergency Management Planning Committee |
| RSFMP | Regional Strategic Fire Management Plan |
| The Act | <i>Emergency Management Act 2013</i> |
| VCC-EM | Victorian Council of Churches – Emergencies Ministry |
| VICSES | Victoria State Emergency Service |
| VFRR | Victorian Fire Risk Register |
| WCMA | Wimmera Catchment Management Authority |

Appendix B – Agency work plans

| Agency | Plan | Review schedule |
|-------------------------------------|---|-------------------|
| CFA / DEECA / FFMV / Parks Victoria | Joint Fuel Management Plan | Annual |
| Department of Transport | Grampians Region Fire Prevention Plan | Annual |
| GWMWater | Emergency Management Plan CMS/2690 | Every three years |
| NGSC | Strategic Fire Breaks Table (see Appendix D of this plan) | Annual |
| Powercor | Bushfire Mitigation Plan | Annual |
| Powercor | Electric Line Clearance Management Plan | Annual |
| VicTrack | Annual Fire Prevention Program – Stawell & St Arnaud | Annual |

Appendix C – VFRR-B Review

|  Northern Grampians Shire Victorian Fire Risk Register - Bushfire (December 2024) | | | | | | |
|---|--------------------|-------------------------|--------------------------------------|-------------------------------------|---------------------|--------------------|
| Asset ID | Asset Class | Asset Subclass | Asset Name | Location | Land Manager | Risk Rating |
| 65041 | Human Settlement | Special Fire Protection | Aginda Youth Camp | Scott RD Halls Gap | Private | Extreme |
| 65055 | Human Settlement | Other | Black Range Stawell | Ganawarra RD | Private | Extreme |
| 65007 | Human Settlement | Special Fire Protection | Borough Huts Camping Ground | Grampians RD Grampians NP | Parks Vic | Extreme |
| 65010 | Human Settlement | Residential | Halls Gap | Halls Gap Complex | Private | Extreme |
| 65006 | Human Settlement | Special Fire Protection | Halls Gap Camping Ground | 23-27 Tymna DVE Halls Gap | Private | Extreme |
| 65028 | Human Settlement | Special Fire Protection | Halls Gap PS | 10 - 14 Halls Gap RD Halls Gap | Other | Extreme |
| 65035 | Human Settlement | Special Fire Protection | Lake Fyans Holiday Park and RSL Camp | 650 Mokepilly RD Lake Fyans | Other | Extreme |
| 6552387 | Human Settlement | Special Fire Protection | Lake Lonsdale Campground | Sandbar RD Lonsdale | Private | Extreme |
| 65008 | Human Settlement | Special Fire Protection | MacKenzie Falls Visitor Node | 57 Cranages RD Zumsteins | Private | Extreme |
| 65040 | Human Settlement | Special Fire Protection | Norval Lodge Youth Camp | 1-3 Ellis ST Halls Gap | Private | Extreme |
| 65001 | Human Settlement | Special Fire Protection | Plantation Camping Ground | Halls Gap - Mt Zero RD Grampians NP | Parks Vic | Extreme |
| 6552380 | Human Settlement | Other | Roses Gap | Roses Gap RD Roses Gap | Private | Extreme |
| 65053 | Human Settlement | Other | Saint Arnaud East | Saint Arnaud | Private | Extreme |
| 65004 | Human Settlement | Special Fire Protection | Smith Mill Camping Ground | Smith RD Grampians NP | Parks Vic | Extreme |
| 65002 | Human Settlement | Special Fire Protection | Stapylton Camping Ground | Millar RD Grampians NP | Parks Vic | Extreme |

| | | | | | | |
|---------|------------------|-------------------------|---|--|-----------|------------------|
| 65057 | Human Settlement | Residential | Stawell London Road Sisters Rocks | Stawell | Private | Extreme |
| 65052 | Human Settlement | Residential | Stawell North | Ironbark Interface | Private | Extreme |
| 65039 | Human Settlement | Special Fire Protection | Tandara Lutheran Youth Camp | Tandara RD Halls Gap | Private | Extreme |
| 65034 | Human Settlement | Special Fire Protection | The Anglers Caravan Park and Scout Camp | Springwood Hill RD Lake Fyans | Other | Extreme |
| 6552379 | Human Settlement | Other | Ararat Halls Gap Road | Ararat Halls Gap RD Halls Gap | Private | Very High |
| 65005 | Human Settlement | Special Fire Protection | Boreang Camping Ground | Glenelg River RD Grampians NP | Parks Vic | Very High |
| 65042 | Human Settlement | Special Fire Protection | Camp Acacia | Grampians RD Halls Gap | Private | Very High |
| 65024 | Human Settlement | Special Fire Protection | Concongella PS | Concongella School RD Concongella | Other | Very High |
| 65025 | Human Settlement | Special Fire Protection | Glenvale School | Cahill RD Stawell | Other | Very High |
| 65036 | Human Settlement | Special Fire Protection | Parkgate Resort | 2372 Grampians RD Halls Gap | Private | Very High |
| 65043 | Human Settlement | Special Fire Protection | Roses Gap Recreation Centre | Roses Gap RD Roses Gap | Private | Very High |
| 65033 | Human Settlement | Special Fire Protection | Saint Arnaud Health Precinct | 52 North Western RD Saint Arnaud | Private | Very High |
| 65012 | Human Settlement | Residential | Saint Arnaud Interface | Saint Arnaud | Private | Very High |
| 65046 | Human Settlement | Special Fire Protection | Seed Camp | Cnr Sunraysia Hwy and Church Street, Stuart Mill | Private | Very High |
| 65048 | Human Settlement | Special Fire Protection | Stawell Park Caravan Park | 2 Monaghan RD Stawell | Private | Very High |
| 65044 | Human Settlement | Special Fire Protection | Teddington Camping Ground | Teddington RD St Arnaud Range NP | Parks Vic | Very High |
| 6552386 | Human Settlement | Special Fire Protection | Walkers Lake Caravan Park | Avon Plains RD | Private | Very High |
| 65003 | Human Settlement | Special Fire Protection | Zumsteins Day Visitors Site | Mt Victory RD Grampians NP | Public | Very High |

| | | | | | | |
|---------|------------------|-------------------------|---------------------------------|-----------------------------|---------|--------|
| 65058 | Human Settlement | Other | Deep Lead | 37th Parallel RD | Private | High |
| 6552385 | Human Settlement | Special Fire Protection | Eventide Retirement Village | 111 Patrick ST Stawell | Private | High |
| 65015 | Human Settlement | Other | Glenorchy | Glenorchy | Private | High |
| 65037 | Human Settlement | Special Fire Protection | Grampians Gardens Caravan Park | 2223 Grampians RD Halls Gap | Private | High |
| 6550777 | Human Settlement | Special Fire Protection | Great Western PS | Stephenson ST | Public | High |
| 65038 | Human Settlement | Special Fire Protection | Halls Gap Lakeside Caravan Park | Tymna DR Halls Gap | Other | High |
| 65031 | Human Settlement | Special Fire Protection | Marnoo PS | McKinnon ST Marnoo | Other | High |
| 65030 | Human Settlement | Special Fire Protection | Navarre PS | High ST Navarre | Other | High |
| 6550787 | Human Settlement | Special Fire Protection | St Arnaud Secondary College | Smith ST | Public | High |
| 65032 | Human Settlement | Special Fire Protection | St Patricks PS | Wattle ST Saint Arnaud | Private | High |
| 6550786 | Human Settlement | Special Fire Protection | St Patrick's School | 55 Patrick's ST | Public | High |
| 65013 | Human Settlement | Residential | Stawell Interface | Stawell | Private | High |
| 65026 | Human Settlement | Special Fire Protection | Stawell SC | Patrick ST Stawell | Other | High |
| 65014 | Human Settlement | Residential | Stawell South and London Road | Stawell | Private | High |
| 6550778 | Human Settlement | Special Fire Protection | Stawell West PS | 80-88 Cooper ST | Public | High |
| 65051 | Human Settlement | Other | Stuart Mill | Stuart Mill | Other | High |
| 65016 | Human Settlement | Residential | Great Western | Great Western | Private | Medium |
| 65056 | Human Settlement | Other | Marnoo | Marnoo | Private | Medium |

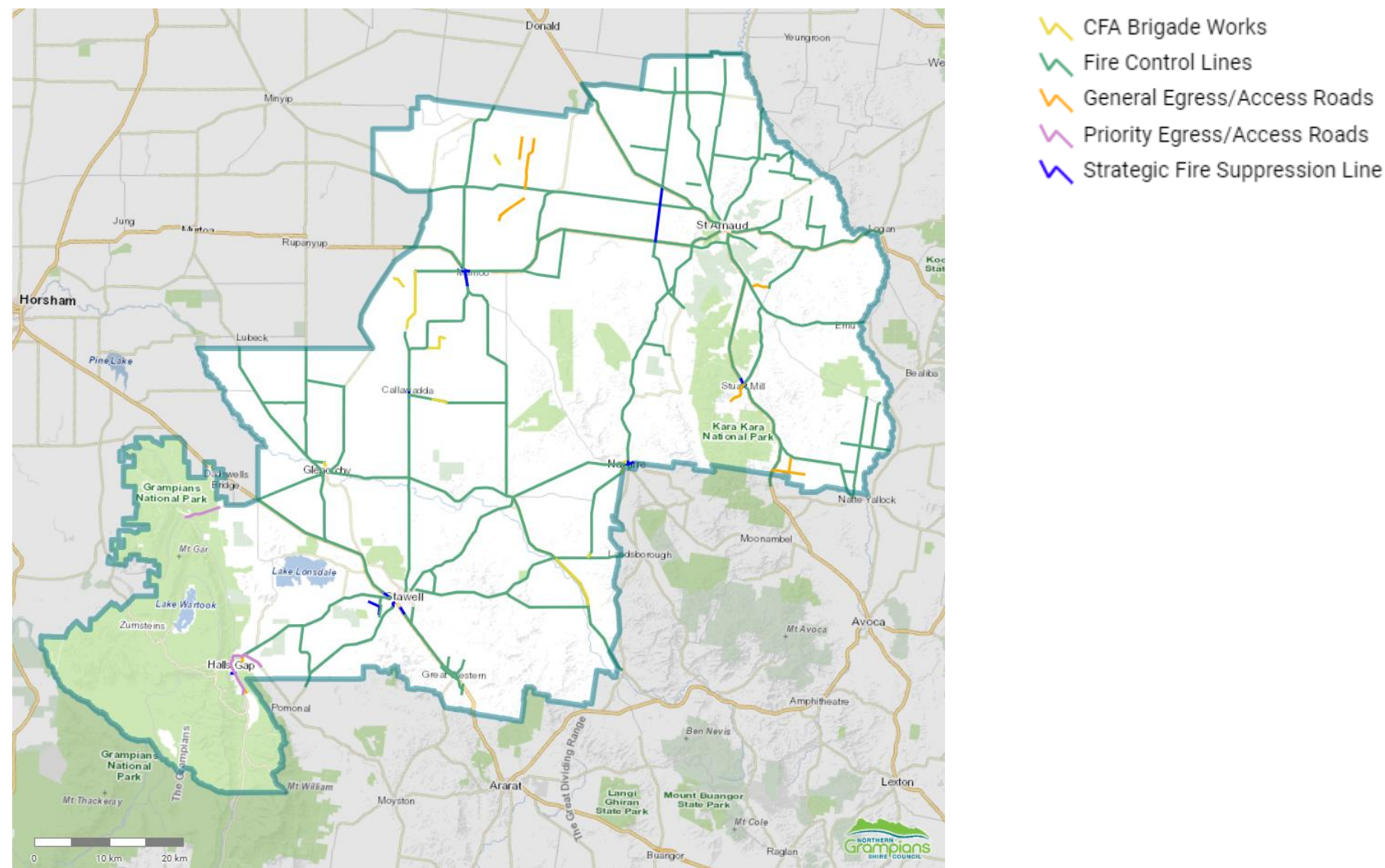
| | | | | | | |
|---------|------------------|--------------------------|--|----------------------------------|-----------------|-----------|
| 65054 | Human Settlement | Other | Navarre | Navarre | Private | Medium |
| 6554035 | Economic | Commercial | Frew Foods International | 46 Abattoirs Road, Stawell | Private | Extreme |
| 65224 | Economic | Mine | Stawell Gold Mines | Stawell | Private | Extreme |
| 65205 | Economic | Infrastructure | Ararat - Stawell 66KV Sub-transmission Line | Ararat to Stawell | Other | Very High |
| 65204 | Economic | Infrastructure | ARTC | Melbourne to SA | Rail Authority | Very High |
| 6554034 | Economic | Infrastructure | Bulgana Green Power Hub and Battery Energy Storage System (BESS) | Joel Joel | Private | Very High |
| 65235 | Economic | Commercial Forest | Hardwood Plantations | Northern Grampians | Private | Very High |
| 65229 | Economic | Infrastructure | Horsham - Stawell 66KV Sub-transmission Line 1 | Horsham to Stawell | Private | Very High |
| 65230 | Economic | Infrastructure | Horsham - Stawell 66KV Sub-transmission Line 2 | Horsham to Stawell | Private | Very High |
| 6551829 | Economic | Infrastructure | Lake Bellfield Outlet and Pipeline Works | Lake Bellfield | Private | Very High |
| 6554038 | Economic | Infrastructure | Marnoo Communications Tower | Marnoo | Private | Very High |
| 6552725 | Economic | Infrastructure | Moora Moora Outlet Works | Glenelg River Road | Private | Very High |
| 6554039 | Economic | Infrastructure | Studall Rd Communications Tower | Wallaloo East | Private | Very High |
| 6554040 | Economic | Infrastructure | Wallaloo E Rd Communications Tower | 356 Wallaloo Hall Road, Wallaloo | Private | Very High |
| 65222 | Economic | Infrastructure | BATS-HOTS 220KV Transmission Line | Ballarat to Horsham | Private | High |
| 6554036 | Economic | Infrastructure | Gilmac Hay Processing Facility | 3763 Charlton Road, St Arnaud | Private | High |
| 6552807 | Economic | Infrastructure | Glenorchy CEV | Old Glenorchy-Stawell RD | Private | High |
| 65239 | Economic | Infrastructure | Glynwylln Flood and Flow Gauge | Greens Creek RD Greens Creek | Water Authority | High |
| 6554037 | Economic | Infrastructure | Grain Silos | Marnoo | Private | High |
| 6554041 | Economic | Tourist and Recreational | Grampians Peak Trail | Mount Difficult Range | LGA | High |
| 65215 | Economic | Infrastructure | Great Western WTP | North Great Western | Water Authority | High |

| | | | | | | |
|---------|----------|--------------------------|---|--------------------------------------|-----------------|--------|
| 65220 | Economic | Infrastructure | Halls Gap WTP | Tymna DR Halls Gap | Water Authority | High |
| 6551832 | Economic | Infrastructure | Lake Fyans | Mokepilly RD Lake Fyans | Private | High |
| 65203 | Economic | Infrastructure | Mildura Rail Line | Northern Grampians | Rail Authority | High |
| 65209 | Economic | Infrastructure | Saint Arnard WTP | Saint Arnard SF | Water Authority | High |
| 65208 | Economic | Infrastructure | Saint Arnaud WPS 2 | McQueen RD Saint Arnaud | Water Authority | High |
| 6552727 | Economic | Infrastructure | St Arnaud WWTP | 51 McRoberts RD St Arnaud | Private | High |
| 65232 | Economic | Infrastructure | Stawell - Halls Gap 22KV Distribution Feeder Line | Stawell to Halls Gap | Private | High |
| 6552640 | Economic | Infrastructure | Stawell Aerodrome Automatic Weather Station | | Private | High |
| 65214 | Economic | Infrastructure | Stawell Airport | Aerodrome RD Stawell | Private | High |
| 6553107 | Economic | Infrastructure | Stawell mobile site | Big Hill Lookout Stawell | Private | High |
| 65213 | Economic | Infrastructure | Stawell WTP | Crowlands RD Stawell | Water Authority | High |
| 6552726 | Economic | Infrastructure | Stawell WWTP | 30 Hines RD Stawell | Private | High |
| 65206 | Economic | Infrastructure | Stawell Zone Substation | Western HWY Stawell | Private | High |
| 65233 | Economic | Infrastructure | Western HWY | Northern Grampians | VicRoads | High |
| 65236 | Economic | Tourist and Recreational | Brambuk Aboriginal Cultural Centre | Halls Gap South | Other | Medium |
| 6551835 | Economic | Infrastructure | Dad and Dave Weir | Mt Victory RD Zumsteins | Private | Medium |
| 6553105 | Economic | Infrastructure | Dadswell Bridge mobile site | Western HWY Dadswells Bridge | Private | Medium |
| 6551830 | Economic | Infrastructure | Dairy Creek | Sundial RD Dairy Creek | Private | Medium |
| 6551837 | Economic | Infrastructure | Fyans Radial Gates | Fyans Creek RD Fyans Creek | Private | Medium |
| 6553106 | Economic | Infrastructure | Glenorchy 3G mobile site | Glenorchy and Campbells RD Glenorchy | Private | Medium |
| 65238 | Economic | Infrastructure | Glenorchy Flow and Flood Gauge | Giles River RD Glenorchy | Water Authority | Medium |
| 65211 | Economic | Infrastructure | Glenorchy WPS | Phillips RD Glenorchy | Water Authority | Medium |
| 6553108 | Economic | Infrastructure | Great Western mobile site | Moyston RD Great Western | Private | Medium |

| | | | | | | |
|---------|-------------------|--------------------------|--|--|-----------------|--------|
| 6551833 | Economic | Infrastructure | Halls Gap Bore 1 | Reids LN and Thryptomene CRT | Private | Medium |
| 65218 | Economic | Infrastructure | Halls Gap Communications Tower | Halls Gap | Private | Medium |
| 6550092 | Economic | Tourist and Recreational | Halls Gap Festivals | Halls Gap | Private | Medium |
| 65217 | Economic | Infrastructure | Halls Gap Mobile Base Station | Grampians NP Halls Gap | Private | Medium |
| 6551836 | Economic | Infrastructure | Lake Wartook Outlet Works | Wartook RD Wartook Reservoir | Private | Medium |
| 6551839 | Economic | Infrastructure | Ledcourt PH Correction PRV Station | CNR School RD and Delahunty RD Ledcourt | Private | Medium |
| 6551838 | Economic | Infrastructure | Lonsdale Lake | Lake Lonsdale | Private | Medium |
| 6552728 | Economic | Infrastructure | Marnoo PRV Control Valve Station | Wimmera HWY Marnoo | Private | Medium |
| 65210 | Economic | Infrastructure | Marnoo WPS | Newell ST Marnoo | Water Authority | Medium |
| 65221 | Economic | Infrastructure | Mt Zero Mobile Base Station | Mt Zero Grampians NP | Private | Medium |
| 6553111 | Economic | Infrastructure | Navarre mobile site | Cambridge ST and St Arnaud-Ararat RD Navarre | Private | Medium |
| 6553109 | Economic | Infrastructure | St Arnaud mobile site | Tower Hill St Arnaud | Private | Medium |
| 65212 | Economic | Infrastructure | Stawell City Gas Gate | Stawell Avoca RD Stawell | Private | Medium |
| 6551831 | Economic | Infrastructure | Stawell Weir | Grampians RD Stawell | Private | Medium |
| 6553110 | Economic | Infrastructure | Stuart Mill mobile site | Sunraysia HWY Stuart Mill | Private | Medium |
| 65225 | Economic | Commercial | Frew Stall Abattoir | Stawell | Private | Low |
| 65219 | Economic | Drinking Water Catchment | Lake Bellfield Water Catchment | Grampians National Park | Other | Low |
| 65216 | Economic | Drinking Water Catchment | Lake Wartook Water Catchment | Grampians National Park | Other | Low |
| 65207 | Economic | Infrastructure | Saint Arnaud WPS | Reservoir RD Swanwater | Water Authority | Low |
| 65237 | Economic | Tourist and Recreational | Stawell Gift | Stawell | Private | Low |
| 6554042 | Cultural Heritage | Non-Indigenous | Best's Wines | 111 Best Road, Great Western | Private | High |
| 65617 | Cultural Heritage | Non-Indigenous | Former Literary and Scientific Institute | Longfield Road | Other | High |
| 65616 | Cultural Heritage | Non-Indigenous | Former Pleasant Creek Court House | Little Seaby Lane | Other | High |

| | | | | | | |
|-------|-------------------|----------------|---|--------------------------|---------|------|
| 65615 | Cultural Heritage | Non-Indigenous | Former Police Superintendents Residence | Griffiths Road | Other | High |
| 65602 | Cultural Heritage | Non-Indigenous | Seppelts Champagne Cellars | Moyston Great Western RD | Private | High |
| 65605 | Cultural Heritage | Non-Indigenous | Stawell Court House | Patrick Street | Other | High |
| 65614 | Cultural Heritage | Non-Indigenous | Hard Hill Mining Site | Hard Hill | Other | |
| 65607 | Cultural Heritage | Non-Indigenous | Heatherlie (Mt Difficult) Quarry | Heatherlie 4WD RD | Other | |
| 65606 | Cultural Heritage | Non-Indigenous | Ledcourt Homestead | | Other | |
| 65612 | Cultural Heritage | Non-Indigenous | Lloyds Whip Gold Mining Site | Sunraysia HWY | Other | |
| 65611 | Cultural Heritage | Non-Indigenous | St Peters Anglican Church | Dunolly RD | Other | |
| 65613 | Cultural Heritage | Non-Indigenous | Tottington Homestead Woolshead | Ararat St Arnaud RD | Other | |

Appendix D – Strategic fire breaks map and table



| Strategic Fire Breaks within the Northern Grampians Shire (updated June 2025) | | | | | |
|---|----------------------------|--|--|--------------|---|
| Strategic Fire Suppression Lines | | | | | |
| Locality | Road Name | From | To | Land Manager | Treatment |
| Callawadda | Donald-Stawell Rd (C238) | Creek Rd | 100m north of Willaring Rd | RRV | Slash, Fence to Fence* |
| Gooroc | Lanfrankie Rd | Sunraysia Hwy (B220) | Wimmera Hwy (B240) | NGSC | Slash, Fence to Fence* |
| Halls Gap | Silver Springs Rd | Grampians Rd (C216) | <i>End of Road</i> | NGSC | Slash, Fence to Fence* |
| Marnoo | Donald-Stawell Rd (C238) | Wimmera Hwy (B240) | <i>1km south of Auvergne Rd</i> | RRV | Slash, Fence to Fence* |
| Marnoo | Ralunana Rd | Newall St (C238), Marnoo | Wallaloo Creek, Marnoo | NGSC | Slash, Fence to Fence* |
| Marnoo | Wimmera Hwy (B240) | <i>500m west of Donald-Stawell Rd (C238)</i> | <i>500m east of Donald-Stawell Rd (C238)</i> | RRV | Slash, Fence to Fence* |
| Navarre | Ararat-St Arnaud Rd (C241) | High St | 150m north of Cambridge St | RRV | Slash, Fence to Fence* |
| Navarre | High St | Tulkara Railway Rd | Hare St | NGSC | Slash, Fence to Fence* |
| Stawell | Western Hwy (A8) | 450m SE of Yellow Box Rd | Grampians Rd (C216) | RRV | Slash, Fence to Fence* |
| Stawell | Western Hwy (A8) | Sloane St | <i>100m north of Gilchrist Rd</i> | RRV | Slash, Fence to Fence* |
| Stawell | Pomonal Rd (C221) | Burgh St | McCanns Bushland Reserve | RRV | Slash, Fence to Fence* |
| Stawell | Stawell Aerodrome | Both North-South and East-West runways for the entire length | | NGSC | Slash, Fence to Fence* |
| Stuart Mill | Sunraysia Hwy (B220) | Paulin La | Church St | RRV | Slash, Fence to Fence* |
| Fire Control Lines | | | | | |
| Locality | Road Name | From | To | Land Manager | Treatment |
| Beazleys Bridge | Sandy Creek Road | Old Sandy Creek Rd | Ararat-St Arnaud Rd (C241) | NGSC | Spray first, slash if needed (3m cut behind guide posts*) |

| | | | | | |
|------------------|---------------------------------|--|--|------|---|
| Beazleys Bridge | Jacksons Rd | Sandy Creek Rd | Darcy's Bridge Rd | NGSC | Spray first, slash if needed (3m cut behind guide posts*) |
| Beazleys Bridge | Darcys Bridge Rd | Jacksons Rd | Wimmera Hwy (B240) | NGSC | Spray first, slash if needed (3m cut behind guide posts*) |
| Beazleys Bridge | Wingfield Rd | Sandy Creek Rd | Ararat-St Arnaud Rd (C241) | NGSC | Spray first, slash if needed (3m cut behind guide posts*) |
| Callawadda | Willaring Rd | Donald-Stawell Rd (C238), Calawadda | Wallaloo East Rd, Wallaloo East | NGSC | Slash, 3m cut behind guide posts* |
| Campbells Bridge | Greens Creek Rd | Donald-Stawell Rd (C238), Campbells Bridge | Wallaloo East Rd, Greens Creek | NGSC | Slash, 3m cut behind guide posts* |
| Carapooee | Dunolly Rd | Sunraysia Hwy (B220), Carapooee West | Shire Boundary, Avoca River, Emu | NGSC | Slash, 3m cut behind guide posts* |
| Carapooee | Kooreh Rd | Harman Rd | Wimmera Hwy (C241) | NGSC | Spray first, slash if needed (3m cut behind guide posts*) |
| Coonooer Bridge | Burrumbite Rd | St Arnaud-Wycheproof Rd (C271), Sutherland | Lewis Rd, Coonooer West | NGSC | Slash, 3m cut behind guide posts* |
| Coonooer Bridge | Boundary Rd | St Arnaud-Wycheproof Rd (C271) | Phillips Rd | NGSC | Spray first, slash if needed (3m cut behind guide posts*) |
| Coonooer Bridge | Phillips Rd | Boundary Rd | Valpine Rd | NGSC | Slash, 3m cut behind guide posts* |
| Coonooer Bridge | Valpine Rd | Phillips Rd | River Rd | NGSC | Slash, 3m cut behind guide posts* |
| Deep Lead | Stawell-Warracknabeal Rd (C235) | Western Hwy (A8), Deep Lead | Shire Boundary, Bismark-Lubeek Rd, Wal Wal | RRV | Slash, 3m cut behind guide posts* |
| Glenorchy | Ti Tree Swamp Rd | Stawell-Warracknabeal Rd (C235), Glenorchy | Melbourne-Adelaide Railway Line, Glenorchy | RRV | Slash, 3m cut behind guide posts* |
| Glenorchy | Phillips Rd | Western Hwy (A8), Dadswells Bridge | Stawell-Warracknabeal Rd (C235), Glenorchy | NGSC | Slash, 3m cut behind guide posts* |

| | | | | | |
|---------------|---------------------------------|--|---|------|---|
| Glenorchy | Murtoa-Glenorchy Rd (C237) | Shire Boundary, Bismark-Lubeck Rd, Lubeck | Stawell-Warracknabeal Rd (C235), Glenorchy | RRV | Slash, 3m cut behind guide posts* |
| Glenorchy | Glenorchy Rd | Minnieboro Rd, Riachella | Melbourne-Adelaide Railway Line, Glenorchy | NGSC | Slash, 3m cut behind guide posts* |
| Glenorchy | Campbells Bridge Rd | Melbourne-Adelaide Railway Line, Glenorchy | Donald Stawell Rd (C238), Campbells Bridge | NGSC | Slash, 3m cut behind guide posts* |
| Gooroc | Caine Rd | St Arnaud-Wycheproof Rd (C271) | McGrath Rd | NGSC | Spray first, slash if needed (3m cut behind guide posts*) |
| Gooroc | Romey Rd | McGrath Rd | Swanwater Rd | NGSC | Spray first, slash if needed (3m cut behind guide posts*) |
| Gooroc | Michael Rd | Fitzpatrick Rd | Yelta-Melbourne Railway Line | NGSC | Slash, 3m cut behind guide posts* |
| Gooroc | Lanfrankie Rd | Sunraysia Hwy(B220) | Dunstan Rd | NGSC | Spray first, slash if needed (3m cut behind guide posts*) |
| Gooroc | Swanwater North Rd | Swanwater Rd | Burrumbite Rd | NGSC | Spray first, slash if needed (3m cut behind guide posts*) |
| Great Western | Western Hwy (A8) | St Ethels Rd, Great Western | Shire Boundary, 500m S of Railway Overpass, Armstrong | RRV | Slash, 3m cut behind guide posts* |
| Great Western | Bests Rd | Western Hwy (A8), Great Western | Mailes Rd, Great Western | NGSC | Slash, 3m cut behind guide posts* |
| Great Western | Sandy Creek Rd | St Peters Rd, Great Western | Mailes Rd, Great Western | NGSC | Slash, 3m cut behind guide posts* |
| Great Western | St Ethels Rd, Great Western | Garden Gully Rd, Great Western | Western Hwy (A8) | NGSC | Slash, 3m cut behind guide posts* |
| Great Western | Melbourne-Adelaide Railway Line | St Georges Rd, Great Western | St Ethels Rd, Great Western | ARTC | Spray first, slash if needed (3m cut behind guide posts*) |
| Greens Creek | Wimmera Downs Rd | Stawell-Avoca Rd (C221), Greens Creek | Landsborough Rd, Joel Joel | NGSC | Slash, 3m cut behind guide posts* |

| | | | | | |
|---------------|--------------------------|---------------------------------------|---|------|---|
| Wallaloo East | Wallaloo East Rd | Stawell-Avoca Rd (C221), Greens Creek | Kabinga Rd, Wallaloo East | NGSC | Slash, 3m cut behind guide posts* |
| Gre Gre | Carrols Bridge Rd | Baldwin Plains Rd, Gre Gre South | Wimmera Hwy (B240), Gre Gre North | NGSC | Slash, 3m cut behind guide posts* |
| Halls Gap | Grampians Rd (C216) | Ararat-Halls Gap Rd (C222), Halls Gap | Western Hwy (A8), Stawell | RRV | Slash, 3m cut behind guide posts* |
| Halls Gap | Grampians Road | Fyans Creek Rd | Reids Lane | NGSC | Slash, 3m cut behind guide posts* |
| Joel South | Joel South Rd | Landsborough Rd, Joel South | Joel Joel Rd, Joel South | NGSC | Slash, 3m cut behind guide posts* |
| Joel Joel | Joel Joel Rd | Landsborough Rd, Joel Joel | Shire Boundary, 2.5 km S Bulgana Rd , Crowlands | NGSC | Slash, 3m cut behind guide posts* |
| Kooreh | Wedderburn Rd | Wimmera Hwy (B240) | Barneys La | NGSC | Spray first, slash if needed (3m cut behind guide posts*) |
| Kooreh | Stockham Bridge Rd | Gowar East Rd | Proctor Rd | NGSC | Spray first, slash if needed (3m cut behind guide posts*) |
| Kooreh | Gowar East Rd | From 400m south of Stockham Bridge Rd | Hewitt Rd | NGSC | Spray first, slash if needed (3m cut behind guide posts*) |
| Kooreh | Proctor Road | Wimmera Hwy (B240) | Stockham Bridge Rd | NGSC | Spray first, slash if needed (3m cut behind guide posts*) |
| Marnoo | Donald-Stawell Rd (C238) | Creek Rd | 1km south of Auvergne Rd, Marnoo | RRV | Slash, 3m cut behind guide posts* |
| Marnoo | Donald-Stawell Rd (C238) | Wimmera Hwy (B240), Marnoo | Shire Boundary, Bell La, Rich Avon East | RRV | Slash, 3m cut behind guide posts* |
| Marnoo | Bolangum Inn Rd | Wallaloo East Rd, Marnoo | Donald-Stawell Rd (C238), Marnoo | NGSC | Slash, 3m cut behind guide posts* |

| | | | | | |
|---------------|---------------------------------|--|---|------|---|
| Marnoo | Soldiers Rd | Donald-Stawell Rd (C238), Marnoo West | <i>End of sealed section, 500m south of Carrs Plain Rd, Marnoo West</i> | NGSC | Slash, 3m cut behind guide posts* |
| Marnoo | Soldiers Rd | Frews Loop Rd, Marnoo West | Ralunana Rd, Marnoo West | NGSC | Slash, 3m cut behind guide posts* |
| Marnoo | Raluana Rd | Soldiers Rd, Marnoo West | Wallaloo Creek, Marnoo | NGSC | Slash, 3m cut behind guide posts* |
| Marnoo | Donald-Stawell Rd (C238) | Auvergne Rd | 400m south | RRV | Slash, 3m cut behind guide posts* |
| Marnoo | Wimmera Hwy (B240) | Shire Boundary, Banyena Silo Rd, Marnoo West | <i>500m west of Donald-Stawell Rd (C238), Marnoo</i> | RRV | Slash, 3m cut behind guide posts* |
| Marnoo | Wimmera Hwy (B240) | <i>500m east of Donald-Stawell Rd (C238), Marnoo</i> | Wolseley St, St Arnaud | RRV | Slash, 3m cut behind guide posts* |
| Marnoo | Baldwin Plains Rd | Wimmera Hwy (B240), Marnoo East | Carrols Bridge Rd, Gre Gre South | NGSC | Slash, 3m cut behind guide posts* |
| Mokepilly | Mokepilly Rd | Grampians Rd (C216), Mokepilly | Pomonal Rd (C221), Lake Fyans | NGSC | Slash, 3m cut behind guide posts* |
| Moyreisk | Maryborough-St Arnaud Rd (C275) | Sunraysia Hwy (B220), Moyreisk | Shire Boundary, South Rd, Natte Yallock | RRV | Slash, 3m cut behind guide posts* |
| Natte Yallock | Slater Rd | Archdale Rd | St Arnaud - Maryborough Rd | NGSC | Spray first, slash if needed (3m cut behind guide posts*) |
| Natte Yallock | Evans Rd | Slater Rd | St Arnaud-Maryborough Rd | NGSC | Spray first, slash if needed (3m cut behind guide posts*) |
| Natte Yallock | Moyreisk North Rd | Coates Rd | the Avoca River | NGSC | Spray first, slash if needed (3m cut behind guide posts*) |
| Natte Yallock | Peck Rd | Moyreisk North Rd | Archdale Rd | NGSC | Spray first, slash if needed (3m cut behind guide posts*) |
| Navarre | Tulkara Railway Rd | Landsborough Rd, Landsborough West | Stawell-Avoca Rd (C221), Navarre | NGSC | Slash, 3m cut behind guide posts* |

| | | | | | |
|-------------|----------------------------|--|---|------|---|
| Navarre | Ararat-St Arnaud Rd (C241) | Shire Boundary, Stawell-Avoca Rd (C221), Navarre | High St, Navarre | RRV | Slash, 3m cut behind guide posts* |
| Navarre | Ararat-St Arnaud Rd (C241) | 150m north of Cambridge St | Wimmera Hwy (B240), Moolerr | RRV | Slash, 3m cut behind guide posts* |
| Slaty Creek | Slaty Creek Rd | Burrumbite Rd | Charlton-St Arnaud Rd | NGSC | Spray first, slash if needed (3m cut behind guide posts*) |
| Slaty Creek | Robinson Rd | Charlton - St Arnaud Rd | Yawong Rd | NGSC | Spray first, slash if needed (3m cut behind guide posts*) |
| Slaty Creek | Pole Road | Wedderburn Road | Yawong Road | NGSC | Spray first, slash if needed (3m cut behind guide posts*) |
| Slaty Creek | Vogel Road | Pole Road | Yawong Road | NGSC | Spray first, slash if needed (3m cut behind guide posts*) |
| Slaty Creek | Yawong Rd | Robinson Rd | Yawong Low Water Bridge (Avoca River) | NGSC | Spray first, slash if needed (3m cut behind guide posts*) |
| Stawell | Western Hwy (A8) | Shire Boundary, Roses Gap Rd, Dadswells Bridge | 450m SW of Yellow Box Rd | RRV | Slash, 3m cut behind guide posts* |
| Stawell | Western Hwy (A8) | Gilchrist Rd, Stawell | St Georges Rd, Great Western | RRV | Slash, 3m cut behind guide posts* |
| Stawell | Aerodrome Rd | Grampians Rd (C216), Stawell | Pipetrack Rd | NGSC | Slash, 3m cut behind guide posts* |
| Stawell | Pomonal Rd (C221) | McCanns Bushland Reserve, Stawell | Shire Boundary, 500m S of Mokepilly Rd , Lake Fyans | RRV | Slash, 3m cut behind guide posts* |
| Stawell | London Rd (C238) | Western Hwy (A8), Stawell | Melbourne-Adelaide Railway Line, Stawell | RRV | Slash, 3m cut behind guide posts* |
| Stawell | Donald-Stawell Rd (C238) | Newington Rd, Stawell | 100m north of Willaring Rd | RRV | Slash, 3m cut behind guide posts* |
| Stawell | Concongella School Rd | Landsborough Rd, Concongella | Stawell-Avoca Rd (C221), Stawell | NGSC | Slash, 3m cut behind guide posts* |

| | | | | | |
|-----------------|--------------------------------|---|---|-------|---|
| Stawell | Landsborough Rd | Navarre Rd (C221), Stawell | Shire Boundary, Slorach Rd, Landsborough West | NGSC | Slash, 3m cut behind guide posts* |
| Stawell | Stawell-Avoca Rd (C221) | Crowlands Rd, Stawell | Tulkara Railway Rd, Navarre | RRV | Slash, 3m cut behind guide posts* |
| St Arnaud | Wimmera Hwy (B240) | Daly Rd, St Arnaud | Shire Boundary, Avoca River, Logan | RRV | Slash, 3m cut behind guide posts* |
| St Arnaud | Banyena Rd | Shire Boundary, Banyena Silo Rd, Banyena | Sunraysia Hwy (B220), St Arnaud North | NGSC | Slash, 3m cut behind guide posts* |
| St Arnaud | Sunraysia Hwy (B220) | Shire Boundary, Memorial La, Cope Cope | Canterbury St, St Arnaud | RRV | Slash, 3m cut behind guide posts* |
| St Arnaud | Sunraysia Hwy (B220) | Yelta-Melbourne Railway line, St Arnaud | Paulin La, Stuart Mill | RRV | Slash, 3m cut behind guide posts* |
| St Arnaud | Lock Rd | Goldfields Reservoir, St Arnaud | Sunraysia Hwy (B220), St Arnaud | NGSC | Slash, 3m cut behind guide posts* |
| St Arnaud | St Arnaud-Wycheproof Rd (C271) | Wheeler St, St Arnaud | Shire Boundary, Boundary Rd, Coonooer West | RRV | Slash, 3m cut behind guide posts* |
| St Arnaud | Charlton-St Arnaud Rd (C272) | Hoptoun St, St Arnaud | Shire Boundary, Avoca River, Coonooer Bridge | RRV | Slash, 3m cut behind guide posts* |
| St Arnaud | Yelta-Melbourne Railway Line | Sunraysia Hwy (B220), St Arnaud (<i>south crossing</i>) | Carapooeee Rd, St Arnaud East | VLine | Spray first, slash if needed (3m cut behind guide posts*) |
| Stuart Mill | Sunraysia Hwy (B220) | Church St, Stuart Mill | Shire Boundary, Hines La, Redbank | RRV | Slash, 3m cut behind guide posts* |
| Stuart Mill | Stuart Mill Low Rd | Sunraysia Hwy (B220), Stuart Mill | Dunolly Rd, Carapooeee | NGSC | Slash, 3m cut behind guide posts* |
| Stuart Mill | Stuart Mill Low Rd | Sunraysia Hwy (B220) | Topliss Rd | NGSC | Spray first, slash if needed (3m cut behind guide posts*) |
| Stuart Mill | Oxford Street | Sunraysia Hwy | Teddington Rd | NGSC | Spray first, slash if needed (3m cut behind guide posts*) |
| Traynors Lagoon | Traynors Lagoon Rd | Wimmera Hwy (B240), Marnoo East | Banyena Rd, Traynors Lagoon | NGSC | Slash, 3m cut behind guide posts* |

| | | | | | |
|-------------------------------------|----------------------------|--|--|---------------------|--|
| Wal Wal | Wal Wal Station Rd | Murtoa-Glenorchy Rd (C237), Wal Wal | Stawell-Warracknabeal Rd (B210), Wal Wal | NGSC | Slash, 3m cut behind guide posts* |
| Wal Wal | Minnieboro Rd | Stawell-Warracknabeal Rd (B210), Wal Wal | Glenorchy Rd, Riachella | NGSC | Slash, 3m cut behind guide posts* |
| Priority Egress/Access Roads | | | | | |
| Locality | Road Name | From | To | Land Manager | Treatment |
| Halls Gap | Grampians Rd (C216) | Bellfield Cr | Ararat-Halls Gap Rd (C222) | RRV | Tree Maintenance / Slashing - Trimming back for safety clearance |
| Halls Gap | Ararat-Halls Gap Rd (C222) | Grampians Rd (C216) | Trajul Rd | RRV | Tree Maintenance / Slashing - Trimming back for safety clearance |
| Roses Gap | Roses Gap Rd | Morgans Bridge | 1008 Roses Gap Rd, Roses Gap | NGSC | Tree Maintenance / Slashing - Trimming back for safety clearance |
| General Egress/Access Roads | | | | | |
| Locality | Road Name | From | To | Land Manager | Treatment |
| Halls Gap | Reids Ln | Grampians Rd | Thryptomene Ct | NGSC | Slash, 3m cut behind guide posts* |
| Halls Gap | Tymna Dr | Grampians Rd | Halls Gap Lakeside Caravan Park | NGSC | Slash, 3m cut behind guide posts* |
| Redbank | Grants Rd | Sunraysia Hwy (B220) | Smith Rd | NGSC | Spray first, possible slash if needed |
| Redbank | Bandts Rd | Grants Rd | St Arnaud-Maryborough Rd | NGSC | Spray first, possible slash if needed |
| Stuart Mill | Teddington Rd | Sunraysia Hwy (B220) | 3km south along Teddington Rd | NGSC | Spray first, possible slash if needed (both sides) |
| Traynors Lagoon | Batyo Rd | Wells Rd | Banyena Rd | NGSC | Slash, 3m cut behind guide posts* |
| Traynors Lagoon | Campbell Rd | Wells Rd | Volcano Rd | NGSC | Slash, 3m cut behind guide posts* |
| Grays Bridge | Old Banyena Rd | Wrights Rd | Bryce Rd | NGSC | Slash, 3m cut behind guide posts* |

| | | | | | |
|--------------------------|---|---------------------------------|------------------------------------|-----------------------|---------------------------------------|
| Carapooee | Harman Rd | Dunolly Rd | Kooreh Rd | NGSC | Spray first, possible slash if needed |
| CFA Brigade Works | | | | | |
| Locality | Road Name | From | To | CFA Brigade | Treatment |
| Avon Plains | Donald-Avon Plains Rd | Harvey Rd | Avon Plains Rd | Avon Plains | Burn (Walkers Lake) |
| Callawadda | Willaring Rd | Between Aitken Rd and Walter Rd | Walter Rd | Callawadda | Burn (north side) |
| Glenorchy | Glenorchy Oval | Clarke St Glenorchy | As mapped | Glenorchy & Riachella | Burn |
| Joel Joel | Wimmera Downs Rd | Greens Creek | Landsborough Rd | Joel Joel | Burn |
| Joel Joel | Joel Joel Rd | Landsborough Rd | Joel South Rd | Joel Joel | Burn |
| Landsborough West | Tulkara Railway Rd | Landsborough Rd | Landsborough West tennis courts | Joel Joel | Burn |
| Marnoo | Frying Pan Rd | Richardsons River | Frews Loop Rd | Marnoo | Burn |
| Marnoo | Soldiers Rd | Raluana Rd | Carrs Plain Rd | Marnoo | Burn |
| Navarre | Disused Tulkara Rail Yard, Nobbys Lane - Private Rd / Nobbys Lane | Bains Road | Rickards Rd - west side | Navarre | Burn |
| Navarre | Navarre Sports Association Reserve | Ararat - St Arnaud Rd | Disused Road - west end of reserve | Navarre | Burn |
| Wallaloo East | Major Track & Hazeldene Rds | Hazeldene Rd | Bolangum Silo Rd | Wallaloo East | Burn |

**Northern Grampians Shire
Municipal Fire Management Planning Committee
(MFMPC)**

Terms of Reference

June 2023

1. CONTEXT

The Northern Grampians Shire (NGS) Municipal Fire Management Planning Committee (MFMP) is established and undertakes planning as a subcommittee of the Municipal Emergency Management Planning Committee (MEMPC) formed under the *Emergency Management Act 2013*.

- The MFMP will be chaired from within its membership.
- The MFMP will receive support and guidance from the Regional Emergency Management Planning Committee (REMP) (via the MEMPC).
- Composition will be determined by the MEMPC.

2. SCOPE

The Committee's scope, of which the development of a Municipal Fire Management Plan (MFMP) is part, is to provide a local level forum to build and sustain organisational partnerships, generate a common understanding and shared purpose regarding fire management, ensure that the plans of individual agencies are linked and complement each other, and to collectively achieve a reduction in fire risk to the municipal community.

3. FUNCTIONS

The Northern Grampians Shire MFMP functions as a subcommittee of the MEMPC to:

- Plan the burning or clearing of firebreaks.
- Advise the appropriate authorities as to the existence of and steps to be taken for the removal of fire hazards within the area.
- Advise and make recommendations to the MEMPC in the preparation of its MFMP.
- Recommend to CFA or to the appropriate authorities (as the case may require) any action which the committee deems necessary or expedient to be taken for reducing the risk of an outbreak of fire or for suppressing any fire which may occur within the area.
- Advise the Municipal Fire Prevention Officer (MFPO) concerning the removal of fire hazards under S41 of the [CFA Act 1958](#).
- Refer to the REMPC (via the MEMPC) for consideration all matters which in the opinion of the MFMP should be so referred.
- Carry out such other functions as are conferred or imposed upon the MFMP by the MEMPC.

4. MEMBERSHIP

4.1 Core membership

The MFMP, appointed by the MEMPC, has core representation from the following organisations:

- Northern Grampians Shire Council (NGSC)
- Country Fire Authority (CFA)
- Forest Fire Management Victoria (FFMV)

- Victoria Police
- Department of Transport (DOT)
- Grampians Wimmera Mallee Water (GWMWater)

4.2 Chairperson

The CFA District 16 Commander is the nominated Chairperson for the NGS MFMP. If the Chairperson is unable to attend a meeting, they will nominate a proxy from within their agency who will act as Chairperson for that meeting.

4.3 Proxies

Representatives of core member agencies / organisations who are unable to be present at MFMP meetings must nominate a suitably skilled and authorised representative from their agency / organisation a minimum of 24 hours to the MFMP Chairperson, in writing, before the meeting is scheduled to occur. This proxy is considered to have the same voting rights as the substantive MFMP member, unless the MFMP Chairperson is advised otherwise.

4.4 Additional representation

The core MFMP may invite additional representation from other agencies or organisations with key skills and knowledge to join the MFMP as necessary. These members will not have right to propose or vote on motions requiring a decision by the MFMP, but are welcome to contribute knowledge, information, and insight on behalf of their organisation to the MFMP. The following agencies and organisations may be invited to meetings when required.

- Ambulance Victoria
- AusNet Services
- Department of Families, Fairness & Housing
- Powercor
- Others as required.

5. MEETING FREQUENCY

The MFMP will meet at least two times per year (pre and post fire season) unless otherwise required.

6. MEETING VENUE

NGS MFMP meetings will be held in the Stawell Council Chambers unless determined otherwise by the committee. Online meeting options will be enabled to support remote access as needed.

7. QUORUM

A quorum is greater than 50% (50% + 1) attendance of the current voting members and includes the MFMP Chairperson or Deputy Chairperson. The MFMP may meet in the absence of a quorum being

present, however no decision-making processes, such as motions, may be actioned until a quorum is present.

8. VOTING RIGHTS

The core member agencies and organisations are allocated 1 vote per agency / organisation for the purposes of decision making within the MFMP. The Chairperson has a casting vote if votes on a matter are equal. Additional representatives do not have voting rights for the purposes of decision making within the MFMP.

9. ADMINISTRATIVE AND REPORTING REQUIREMENTS

The MFMP will report two times per year to the MEMPC.

Administrative support requirements will be determined by the committee and resourced through committee members where possible. Planning processes will be managed and supported with technical expertise by relevant fire services.

The administration of the MFMP includes maintaining the committee contact list, scheduling meetings, providing committee members with the meeting agenda, and documenting and distributing minutes and other relevant correspondence. This role is performed by council's MFPO.

The proceedings, information, and documentation of the MFMP is considered confidential unless determined by the MFMP, however these records remain discoverable under the *Freedom of Information Act 1982*.

Any member can submit items to be included on the agenda. The agenda will be confirmed prior to each meeting. Minutes of MFMP meetings will be forwarded to all representative members of the MFMP (including additional members, excluding observers).

Core member organisations / agencies of the MFMP are asked to submit a written report a minimum of 7 days prior to the scheduled MFMP meeting. Written reports are to be also presented verbally to the MFMP during the scheduled meetings and will be recorded within the minutes of the meeting.

Representatives of additional member agencies / organisations may submit a written report to the MFMP Chairperson if the issue / topic is considered of importance to the MFMP, otherwise a verbal report may be submitted at the MFMP and will be recorded in the minutes of the meeting.

Any issues that require escalation will be conveyed by the MFMP Chairperson to the NGS MEMPC.

Appendix F – Stakeholder Analysis & Communications & Engagement Plan

Stakeholder type and engagement level

| Stakeholder type | Description | IAP2 participation level |
|------------------|---|--------------------------|
| Internal | Formal responsibilities for MFMP process and outcomes. | Collaborate & empower |
| Primary | MFMP membership, responsibility for the development of the plan, communication, and engagement across and within organisations | Collaborate & empower |
| Secondary | REMPC membership or fire management role within municipality, may be requested to provide specific inputs, dependent upon outputs, or requested to be involved in specific tasks. | Consult & involve |
| Tertiary | Strong interest in outcomes and may have valuable information / viewpoints to share. | Inform & consult |

Fire management role definitions

| Role | Definition |
|-------------------|--|
| Coordination | Coordination of emergency fire incidents. |
| Control Agency | Control of fire incidents. |
| Land manager | Manages land within Northern Grampians Shire. |
| Response | Has a role in responding to a fire incident. |
| Relief / Recovery | Has a role in relief / recovery phases of a fire incident. |
| Community Info | Provides information to the community in relation to a fire incident. |
| Community Care | Provides community care and support during and after a fire incident. |
| Asset protection | Responsible for protection of identified (private or public) assets within Northern Grampians Shire (for mitigation purposes not during Response). |
| Regulate | Responsible for regulation related to fire management (i.e., legislation, guidelines, local laws, planning regulations). |

| NGS MFMP Stakeholder Analysis | | | | | | | | | | |
|---|--|----------------|--------------|----------|-------------------|-----------------------|----------------|------------------|----------|--|
| Stakeholder | Fire management role within Grampians region | | | | | | | | | |
| | Coordination | Control Agency | Land manager | Response | Relief / Recovery | Community information | Community care | Asset protection | Regulate | Other |
| Grampians REMPC | | | | ✓ | ✓ | ✓ | | | | Regional oversight |
| NGS MEMPC | | | | ✓ | ✓ | ✓ | ✓ | ✓ | | Municipal integrated & strategic emergency planning |
| NGS MFMP | | | | ✓ | ✓ | ✓ | ✓ | ✓ | | Municipal integrated & strategic fire planning |
| Primary | | | | | | | | | | |
| NGSC | ✓ | | ✓ | ✓ | ✓ | ✓ | ✓ | ✓ | ✓ | |
| CFA | | ✓ | | ✓ | ✓ | ✓ | | ✓ | ✓ | Fire safety expertise |
| FFMV | | ✓ | ✓ | ✓ | ✓ | ✓ | | ✓ | ✓ | Forest fire expertise |
| GWMWater | | | ✓ | | | ✓ | | ✓ | | |
| DOT | | | ✓ | ✓ | | ✓ | | ✓ | ✓ | |
| Victoria Police | ✓ | | | ✓ | ✓ | ✓ | | | ✓ | |
| Secondary | | | | | | | | | | |
| General public | | | ✓ | ✓ | ✓ | ✓ | ✓ | ✓ | | Responsibility for private property, social networks & personal wellbeing |
| Emergency Management Victoria (EMV) | | | | | | | | | ✓ | |
| Emergency Recovery Victoria (ERV) | | | | | ✓ | | | | | |
| Department of Energy, Environment, & Climate Action (DEECA) | | | | | ✓ | | | | ✓ | Oversight of rural adjustment & development programs, development of planning controls |
| Environment Protection Authority (EPA) | | | | ✓ | ✓ | ✓ | | | ✓ | |
| AusNet Services | | | | | | ✓ | ✓ | | | |
| Department of Families, Fairness & Housing (DFFH) | | | | | ✓ | ✓ | ✓ | | | |
| Department of Health (DoH) | | | | | ✓ | ✓ | ✓ | | | |
| Powercor | | | | | | ✓ | | ✓ | | |
| Parks Victoria | | | ✓ | ✓ | ✓ | ✓ | | ✓ | ✓ | Forest fire expertise |
| Victoria State Emergency Service (VICSES) | | | | ✓ | | | | | | |
| Australian Rail Track Corporation (ARTC) | | | ✓ | | | | | ✓ | | |
| VicTrack | | | ✓ | | | | | ✓ | | |

| | | | | | | | | | | |
|---|--|--|---|---|---|---|---|---|---|--|
| VLine | | | ✓ | | | | | ✓ | | |
| Regional Development Victoria (RDV) | | | | | | | | | ✓ | |
| Ambulance Victoria (AV) | | | | ✓ | | | ✓ | | | |
| Agriculture Victoria | | | | | ✓ | ✓ | ✓ | | ✓ | Animal health, agricultural loss & recovery responsibilities |
| Telstra | | | | | | ✓ | ✓ | ✓ | | |
| Department of Education & Training (DET) | | | | | ✓ | ✓ | ✓ | | | |
| Wimmera Catchment Management Authority (WCMA) | | | ✓ | | ✓ | | | ✓ | ✓ | |
| Tertiary | | | | | | | | | | |
| Australian Red Cross | | | | | ✓ | ✓ | ✓ | | | |
| Victorian Council of Churches – Emergencies Ministry (VCC-EM) | | | | | ✓ | ✓ | ✓ | | | |
| Uniting Wimmera | | | | | ✓ | ✓ | ✓ | | | |
| Stawell Neighbourhood House | | | | | ✓ | ✓ | ✓ | | | |
| Grampians Community Health | | | | | ✓ | ✓ | ✓ | | | |
| East Wimmera Health Service | | | | | ✓ | ✓ | ✓ | | | |
| Stawell Regional Health | | | | | ✓ | ✓ | ✓ | | | |
| Media | | | | ✓ | ✓ | ✓ | | | | |
| Local Landcare Groups | | | | | ✓ | ✓ | | ✓ | | |

| NGS MFMP Communication and Engagement Plan | | | | | | | | | | | |
|--|-----------------------|------------------------------------|----------------|--------------|---------------|--------------|------------------|-------------------------|------------------------------|---------------|-------------------------|
| Stakeholder | Engagement Level | Engagement activity | | | | | | | | | |
| | | Meeting minutes, reports & agendas | 1:1 consulting | NGSC website | Email updates | Social media | Special meetings | Draft plan consultation | Notification of plan updates | 3-year review | Individual org networks |
| Internal | | | | | | | | | | | |
| Grampians REMPC | Collaborate & empower | ✓ | | ✓ | ✓ | ✓ | ✓ | ✓ | ✓ | ✓ | |
| NGS MEMPC & MFMP | | | | | | | | | | | |
| Primary | | | | | | | | | | | |
| NGSC | Collaborate & empower | ✓ | ✓ | ✓ | ✓ | ✓ | ✓ | ✓ | ✓ | ✓ | ✓ |
| CFA | | | | | | | | | | | |
| DEECA | | | | | | | | | | | |
| GWMWater | | | | | | | | | | | |
| DOT | | | | | | | | | | | |
| Victoria Police | | | | | | | | | | | |
| Secondary | | | | | | | | | | | |
| General public | Involve & consult | | | | | | | | | | |
| EMV | | | | | | | | | | | |
| ERV | | | | | | | | | | | |
| DEECA | | | | | | | | | | | |
| EPA | | | | | | | | | | | |
| Parks Victoria | | | | | | | | | | | |
| AusNet Services | | | | | | | | | | | |
| DFFH | | | | | | | | | | | |
| DoH | | | | | | | | | | | |
| Powercor | | | | | | | | | | | |
| VICSES | | | | | | | | | | | |
| ARTC / VicTrack / VLine | | | | | | | | | | | |
| RDV | | | | | | | | | | | |
| AV | | | | | | | | | | | |
| DJPR - AgVic | | | | | | | | | | | |
| Telstra | | | | | | | | | | | |
| DET | | | | | | | | | | | |
| WCMA | | | | | | | | | | | |
| Tertiary | | | | | | | | | | | |
| Australian Red Cross | Inform & consult | | | ✓ | | ✓ | | ✓ | ✓ | ✓ | |
| VCC -EM | | | | | | | | | | | |
| Uniting Wimmera | | | | | | | | | | | |
| Stawell Neighbourhood House | | | | | | | | | | | |
| Grampians Community Health | | | | | | | | | | | |
| East Wimmera Health Service | | | | | | | | | | | |
| Stawell Regional Health | | | | | | | | | | | |
| Media | | | | | | | | | | | |
| Local Landcare Groups | | | | | | | | | | | |

Appendix G – Bushfire risk treatments

| Community Education and Engagement | | | | |
|---|------------------------|---|---|--|
| Objectives | Timeframe | Agency Treatments | Community / Individual Treatments | Outcome |
| <p>1. To build capacity and knowledge, resilience and understanding of the dangers of bushfire.</p> <p>2. To provide the tools and education opportunities for community and individuals to better prepare and understand the risks of bushfire.</p> <p>3. To build awareness and understanding of the role of fire in the environment.</p> | For the Plan duration. | <ul style="list-style-type: none"> Community education programs Agency Integrated Community engagement activities Bushfire awareness training Multimedia communications Victorian Bushfire Information Line Tourism fire safety campaigns Increase legislative and regulatory awareness Increased awareness of planning controls Targeted education campaign regarding the use and role of fire in the environment | <ul style="list-style-type: none"> To be proactive and seek information To be involved in community education and engagement programs | All agencies will review and evaluate programs and participation of community as part of the review process of the MFMP. |

Hazard Reduction

| Objectives | Timeframe | Agency Treatments | Community / Individual Treatments | Outcome |
|---|------------------------|--|--|--|
| <p>1. To strategically reduce fuel to minimise impact, intensity and spread of bushfire.</p> <p>2. To plan and establish strategic points to effectively combat and manage bushfire activity.</p> | For the Plan duration. | <ul style="list-style-type: none"> Slashing program Burn program Spraying program Pruning program Use appropriate incident modelling tools to identify potential impacts to communities, such as the phoenix modelling tool | <ul style="list-style-type: none"> Private property hazard reduction: <ul style="list-style-type: none"> Cleaning gutters Slashing Mowing Ploughing Grazing Fuel reduction burns | Shared responsibility between agencies and individuals to minimise fire hazards. |

Preparedness

| Objectives | Timeframe | Agency Treatments | Community / Individual Treatments | Outcome |
|---|------------------------|---|--|---|
| <p>1. To understand appropriate actions to reduce the risk and impact of bushfire, initiatives include:</p> <ul style="list-style-type: none"> Ignition prevention Risk identification and treatment Resource preparation Response planning Operational restrictions | For the Plan duration. | <ul style="list-style-type: none"> VFRR process Establishment of Incident Control Centres Catastrophic days Powerline inspections Township Protection Plans Neighbourhood Safer Places – Places of Last Resort Fire breaks | <ul style="list-style-type: none"> Personal bushfire preparedness plans Daily readiness Practice / rehearse plans | <ul style="list-style-type: none"> All agencies regularly evaluate preparation and readiness to respond to fire. Strengthened capacity for agencies to provide an integrated response. Measurable reduction of the impact of bushfire. |

| | | | | |
|--|--|--|--|--|
| <ul style="list-style-type: none"> – System testing – Security of water supply | | <ul style="list-style-type: none"> • Emergency Management Plan • Evacuation Plans • Brigade Pre Plans | | |
|--|--|--|--|--|

Regulatory Controls

| Objectives | Timeframe | Agency Treatments | Community / Individual Treatments | Outcome |
|---|------------------------|---|-----------------------------------|--|
| <p>1. To implement regulation aimed at reducing the risk and impact of bushfire.</p> <p>2. To create and maintain effective linkages between planning functions to better inform proposed residential developments.</p> | For the Plan duration. | <ul style="list-style-type: none"> • Fire hazard inspections • Total fire bans • Planning schemes • Fire danger period • Building codes • Enforcement of fire hazard notices • Response to planning applications | Comply with regulations | <ul style="list-style-type: none"> • Compliance with regulatory controls. • Appropriate residential development. |

Appendix H – Structure fire risk treatments

| Community Education and Engagement | | | | |
|--|------------------------|---|---|--|
| Objectives | Timeframe | Agency Treatments | Community / Individual Treatments | Outcome |
| <p>1. To build capacity and knowledge, resilience and understanding of the dangers of structure fire.</p> <p>2. To provide the tools and education opportunities for community and individuals to better prepare and understand the risks of structure fire.</p> | For the Plan duration. | <ul style="list-style-type: none"> Community education programs Community engagement activities Multimedia communications Increase legislative and regulatory awareness Increased awareness of planning controls | <ul style="list-style-type: none"> To be proactive and seek information To be involved in community education and engagement programs | <ul style="list-style-type: none"> All agencies will review and evaluate programs and participation of community as part of the review process of the MFMP. |

| Hazard Reduction | | | | |
|---|------------------------|---|--|---|
| Objectives | Timeframe | Agency Treatments | Community / Individual Treatments | Outcome |
| <p>1. To strategically reduce fuel to minimise impact, intensity and spread of structure fire.</p> <p>2. To plan and establish strategic points to effectively combat and manage structure fire activity.</p> | For the Plan duration. | <ul style="list-style-type: none"> Conduct fire safety inspections Buildings constructed according to the National Construction Code Use appropriate incident modelling tools to identify potential impacts to communities, such as the plume modelling tool | <ul style="list-style-type: none"> Installation of sprinklers, smoke detectors, fire blankets, and extinguishers Comply with regulations | Agencies and individuals working towards minimising the loss and damage caused by structural fires in the community |

| Preparedness | | | | |
|---|------------------------|--|--|--|
| Objectives | Timeframe | Agency Treatments | Community / Individual Treatments | Outcome |
| <p>1. To understand appropriate actions to reduce the risk and impact of structure fire, initiatives include:</p> <ul style="list-style-type: none"> – Ignition prevention – Risk identification and treatment – Resource preparation – Response planning – Operational restrictions – System testing – Security of water supply | For the Plan duration. | <ul style="list-style-type: none"> • Emergency Management Plan • Evacuation Plans • Brigade Pre Plans | <ul style="list-style-type: none"> • Daily readiness • Maintenance of sprinklers, smoke detectors and fire extinguishers • Building/staff fire drills | <ul style="list-style-type: none"> • All agencies regularly evaluate preparation and readiness to respond to fire. • Measurable reduction of the impact of structure fire. |

| Regulatory Controls | | | | |
|---|------------------------|--|-----------------------------------|--|
| Objectives | Timeframe | Agency Treatments | Community / Individual Treatments | Outcome |
| <p>1. To implement regulation aimed to reducing risk and impact of Structure fire.</p> <p>2. To create and maintain effective linkages between planning functions to better inform proposed residential developments.</p> | For the Plan duration. | <ul style="list-style-type: none"> • Conduct fire safety inspections • Planning schemes • Building codes • Response to planning applications | Comply with regulations | <ul style="list-style-type: none"> • Compliance with regulatory controls. • Appropriate residential development. |