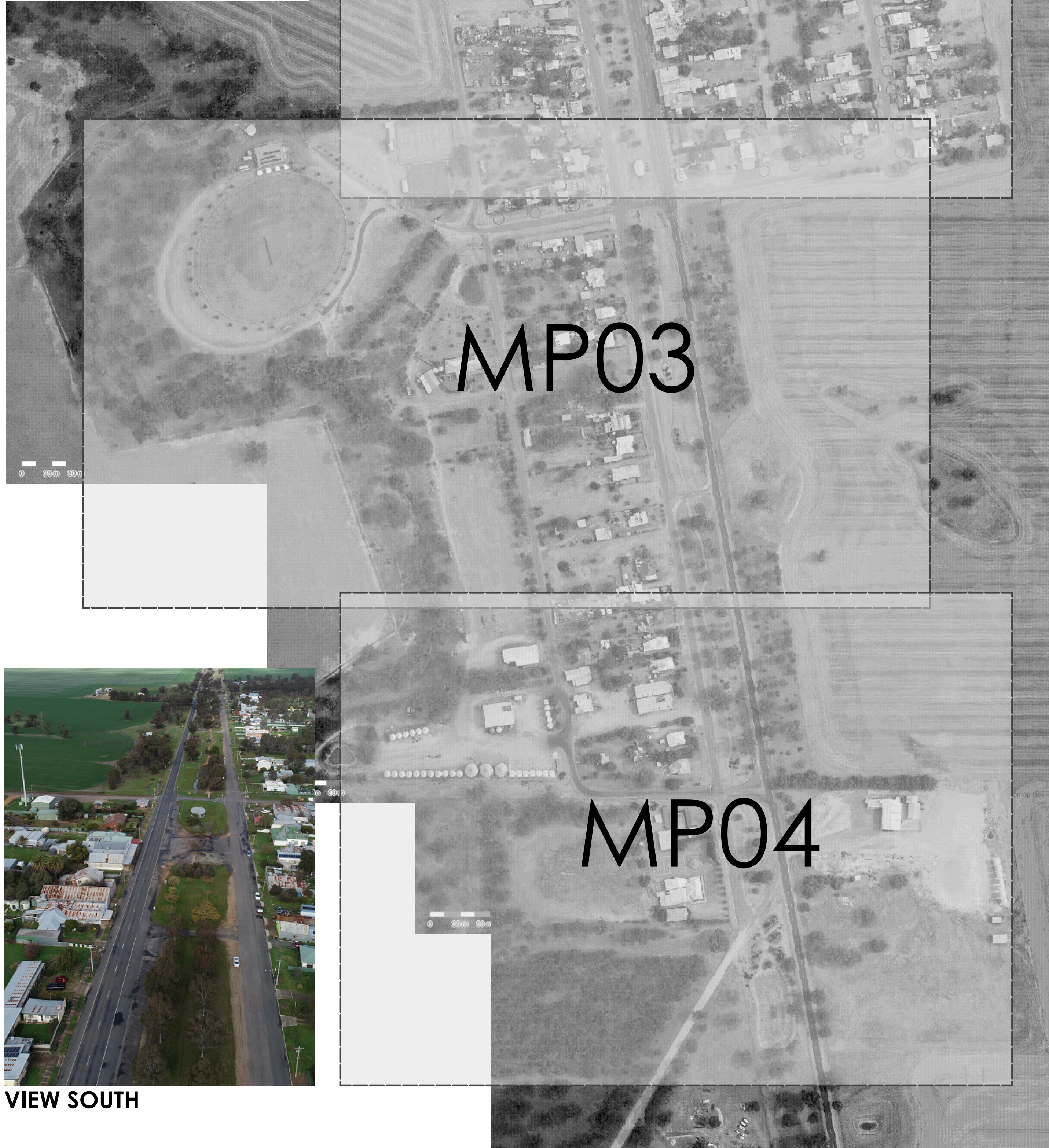
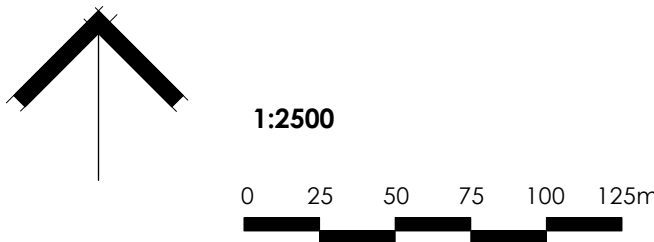




VIEW NORTH



VIEW SOUTH

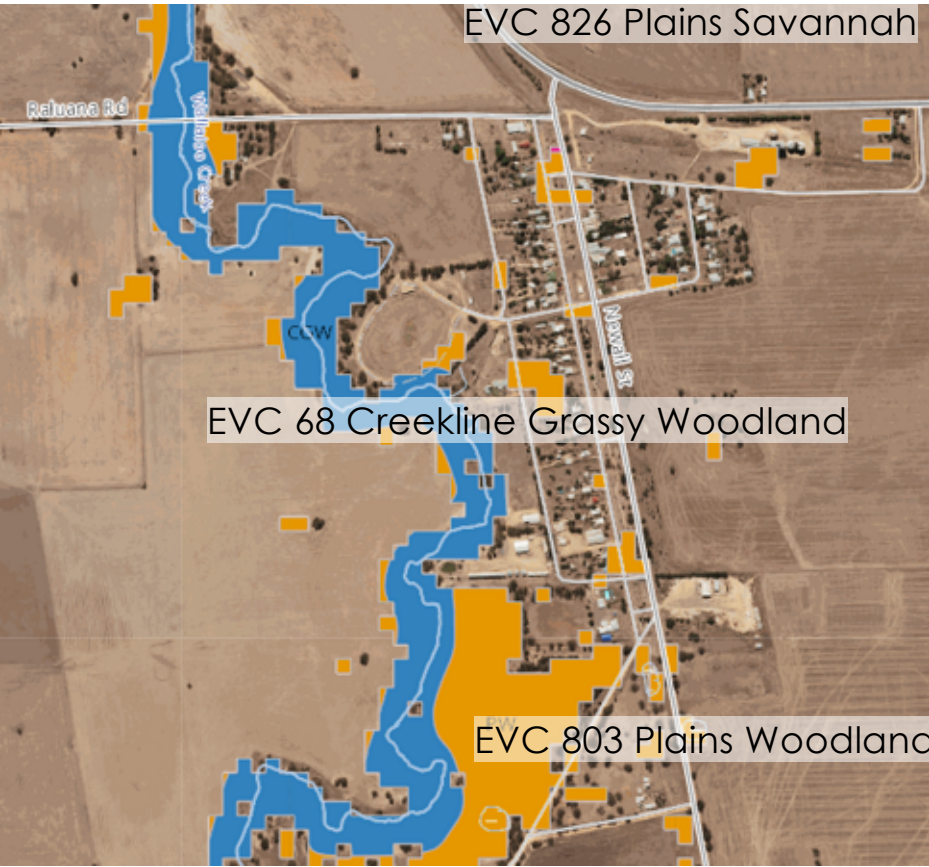


Landscape Master Plan - Existing Conditions, Analysis & Opportunities

# Marnoo Streetscape Beautification

MARNOO VICTORIA 3387

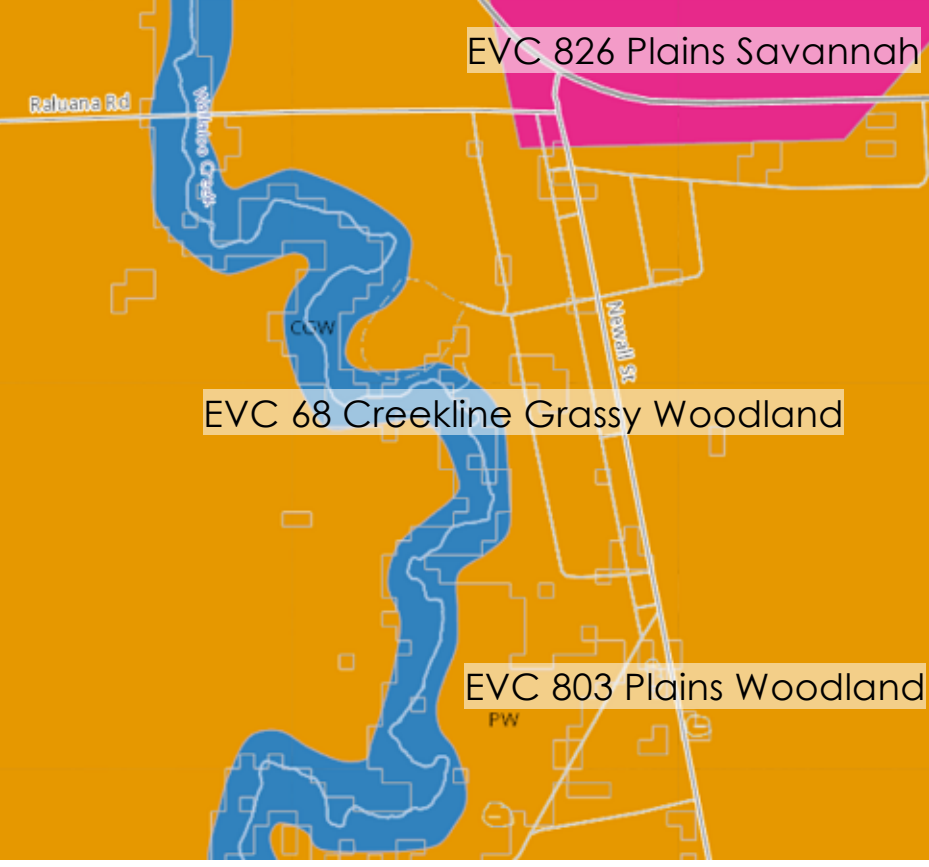
## ECOLOGICAL VEGETATION CLASSES



2005 EVC: Plains Savannah, Plains Woodland & Creekline Grassy Woodland  
<https://maps2.biodiversity.vic.gov.au/Html5viewer/index.html?viewer=NatureKit>

EVC 68 Creekline Grassy Woodland	
<b>Tree</b> <i>Eucalyptus camaldulensis</i>	River Red Gum
<b>Medium Shrub</b> <i>Acacia retinodes</i> var. <i>retinodes</i> <i>Acacia pycnantha</i> <i>Hymenanthera dentata</i> s.l.	Witlida Golden Wattle Tree Violet
<b>Small Shrub</b> <i>Enchylaena tomentosa</i> var. <i>tomentosa</i>	Ruby Saltbush
<b>Medium Herb</b> <i>Gonocarpus tetragynus</i> <i>Acaena echinata</i> <i>Oxalis perennans</i>	Common Raspwort Sheep's Burr Grassland Wood-sorrel
<b>Large Tufted Graminoid</b> <i>Austrostipa bigeniculata</i> <i>Carex appressa</i> <i>Carex tereticaulis</i>	Kneaded Spear-grass Tall Sedge Sedge Rush
<b>Medium Tufted Graminoid</b> <i>Poa labillardierei</i> <i>Cyperus gunnii</i> ssp. <i>gunnii</i> <i>Austroanthanthis racemosa</i> <i>Austroanthanthis caespitosa</i> <i>Microlaena stipoides</i> var. <i>stipoides</i>	Common Tussock-grass Fleeked Flat-sedge Striped Wallaby-grass Common Wallaby-grass Weeping Grass

EVC 803 Plains Woodland	
<b>Tree</b> <i>Eucalyptus leucosylon</i> <i>Allocasuarina luehmannii</i> <i>Eucalyptus microcarpa</i> <i>Eucalyptus melliodora</i>	Yellow Gum Buloke Grey Box Yellow Box
<b>Medium Shrub</b> <i>Acacia pycnantha</i> <i>Acacia acinacea</i> s.l.	Golden Wattle Gold-dust Wattle
<b>Small / Prostrate Shrub</b> <i>Eutaxia microphylla</i> var. <i>microphylla</i> <i>Astroloma humifusum</i>	Common Eutaxia Cranberry Heath
<b>Herbs</b> <i>Senecio quadridentatus</i> <i>Acaena echinata</i> <i>Plantago gaudichaudii</i> <i>Maireana enchylaenoides</i> <i>Calceophalus citreus</i> <i>Solenogyne dominii</i> <i>Oxalis perennans</i> <i>Daucus glochidius</i> <i>Goodenia pinnatifida</i>	Cotton Fireweed Sheep's Burr Narrow Plantain Wingless Bluebush Lemon Beauty-heads Smooth Solenogyne Grassland Wood-sorrel Austral Carrot Cut-leaf Goodenia
<b>Graminoids/Tussocks/ Grasses</b> <i>Austrostipa mollis</i> <i>Austrostipa scabra</i> <i>Austroanthanthis setacea</i> <i>Dianella revoluta</i> s.s. <i>Austroanthanthis caespitosa</i> <i>Wurmbea dioica</i> <i>Centrolepis strigosa</i> ssp. <i>strigosa</i> <i>Centrolepis aristata</i> <i>Amyma miquelii</i> <i>Thysanotus patersonii</i> <i>Convolvulus erubescens</i> ssp. <i>agg.</i>	Supple Spear-grass Rough Spear-grass Bristly Wallaby-grass Black-anther Flax-lily Common Wallaby-grass Common Early Nancy Hairy Centrolepis Painted Centrolepis Box Mistletoe Twining Fringe-lily Pink Bindweed



Pre-1750 EVC: Plains Savannah, Plains Woodland & Creekline Grassy Woodland  
<https://maps2.biodiversity.vic.gov.au/Html5viewer/index.html?viewer=NatureKit>

EVC 826: Plains Savannah	
<b>Trees</b> <i>Allocasuarina luehmannii</i> <i>Callitris gracilis</i> ssp. <i>murrayensis</i>	Buloke Slender Cypress-pine
<b>Medium Shrub</b> <i>Acacia pendula</i> <i>Acacia oswaldii</i>	Boree Umbrella Wattle
<b>Small Shrubs</b> <i>Sclerolaena napiformis</i> <i>Sclerolaena diacantha</i> <i>Maireana decalvans</i> <i>Pimelea curviflora</i> s.s.	Turnip Copperburr Grey Copperburr Black Cotton-bush Curved Rice-flower
<b>Herbs</b> <i>Ptilotus exaltatus</i> <i>Eryngium ovatum</i> <i>Calceophalus citreus</i> <i>Arthropodium fimbriatum</i> <i>Calotis scabiosifolia</i> <i>Goodenia pinnatifida</i> <i>Sida corrugata</i> <i>Ptilotus macrocephalus</i> <i>Maireana pentagona</i> <i>Chamaesyce drummondii</i> <i>Pogonolepis muelleriana</i> <i>Convolvulus erubescens</i> ssp. <i>agg.</i>	Mulla Mulla Blue Devil Lemon Beauty-heads Nodding Chocolate-lily Rough Burr-daisy Cut-leaf Goodenia Variable Sida Feather Heads Hairy Bluebush Flat Spurge Stiff Cup-flower Pink Bindweed
<b>Graminoids</b> <i>Austrostipa blackii</i> <i>Austrostipa gibbosa</i> <i>Austrostipa aristigulmis</i> <i>Austrostipa scabra</i> <i>Austrostipa nodosa</i> <i>Whalleya prolata</i> <i>Austroanthanthis duttoniana</i>	Crested Spear-grass Spurred Spear-grass Plump Spear-grass Rough Spear-grass Knotty Spear-grass Rigid Panic Brown-back Wallaby-grass

**General notes:**  
Three-cornered jacks prevalent throughout the town  
  
No water in town - water tank only or pipeline  
  
Bottled gas  
  
Variety of street trees through out the town both exotic, native and indigenous

## DESIGN INTENT

Potential for **improved connections** through out the **township** to surrounding community - support pedestrian connections through central median north-south & east-west -

To reinforce the existing '**character of Marnoo**' through diversity in design and exploration of a variety of activities for recreational & sporting pursuits

To incorporate principles of **biodiversity** into the future plant selection and habitat creation throughout the township. To educate and encourage engagement with the natural environment through the valuing of the indigenous birds, insects and local fauna. Celebrate through interpretative signage and artistic vision

Support the incorporation of **art, culture and story telling** in the township - considering extending the interpretation of local history / stories and inclusion in places to support wayfinding and navigation throughout the town and greater precinct

Incorporate principles of **sustainability and regeneration** through direct reference to the natural environment in the use of re-used and reclaimed materials

Consideration of the principles of **CPTED** through the provision of open views for safety, seamless access throughout, opportunities to rest and recover and a clear delineation of the public and private realm - ensuring the clear movement of pedestrians and separation from vehicle traffic

It is with respect that we understand that a detailed oral history exists for the stories and customs of the **traditional owners** of this area. Incorporate active engagement with representatives from the local Land Council to reflect the potential interpretation from the **Wotjobaluk and Jaadwa** families.

## GENERAL GUIDELINES

**Lighting** - to create lighting fit for purpose throughout the town - entrances & facilities - for safety, direction, ambience and play

**Paths of travel/circulation** - to provide stroller-able, walk-able, wheel-able, scooter-able routes throughout the town. Width of path to support two passing mobility devices or similar.

**Furniture** - provision of regularly spaced seats with backs & armrests along path system - every 100m. In gathering areas, provide additional seating opportunities

**Drinking Fountains** - provided at gathering areas (investigation required)

**Signage/Wayfinding** - direction & interpretative - include distance markers and artistic interpretation to support walkers with a variety of abilities to mark the significance of a location (reference to local stories of place - felt & seen)

**Shade & shelter** - provision of sheltered areas to support local community and visitor activities

**Sporting & Play Facilities** - support multi-use, multi-size, multi-purpose facilities - such as a multi-linemarking on court facilities, multi sized swings, social swings, etc

**BBQ Facilities**- provision of universally accessible BBQ's in central gathering areas

01.08.2022  
PN 238

FOR COMMENT

PO Box 765 HORSHAM VIC 3402  
041 041 2440  
[felicity@laimiga.com.au](mailto:felicity@laimiga.com.au)  
Note: This is a concept design drawing and not a working drawing. It is not to be used for construction purposes. Levels and dimensions are approximate only. This drawing remains the property of the Landscape Architect. COPYRIGHT LAIMIGA DESIGN STUDIO

