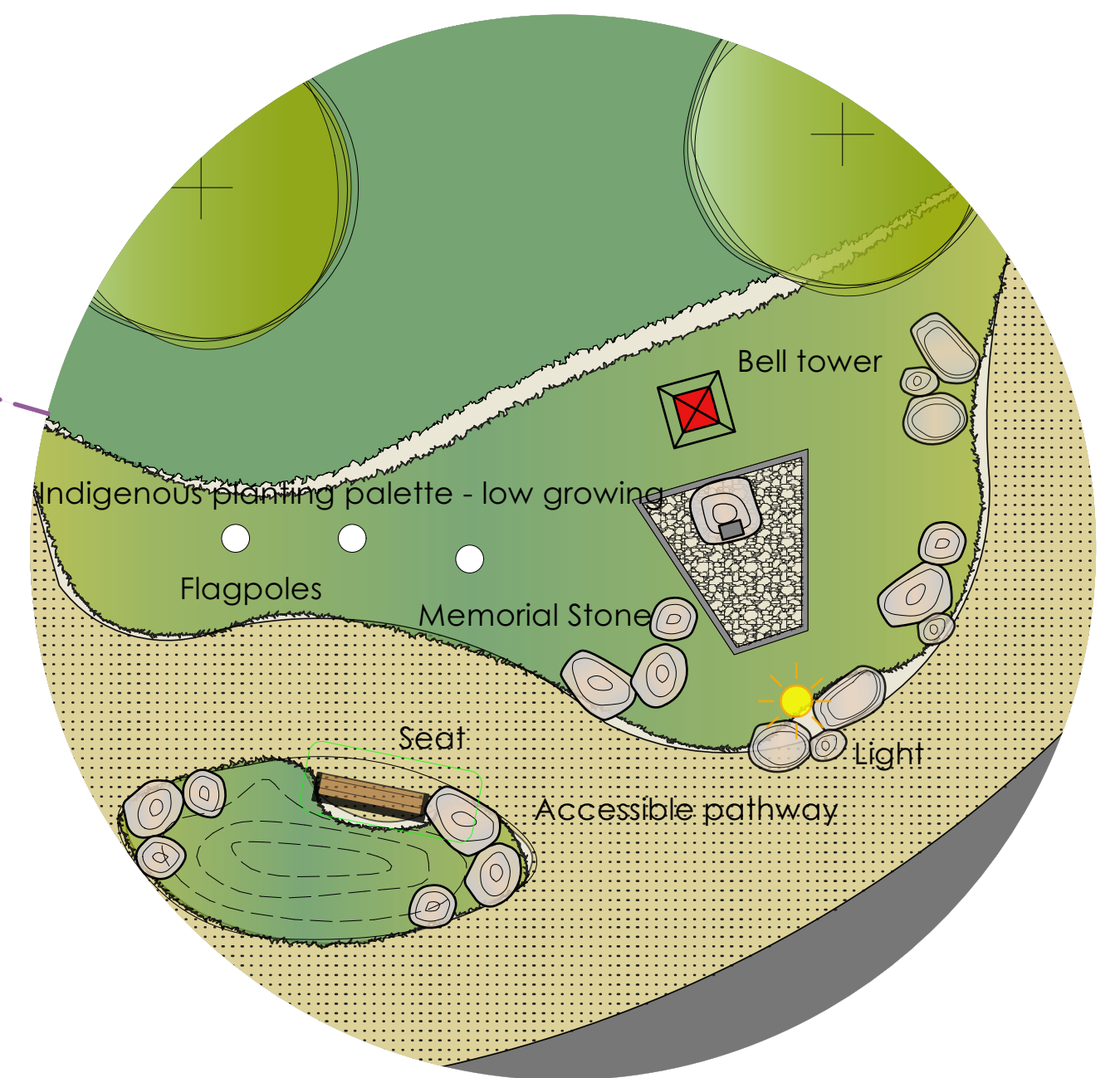
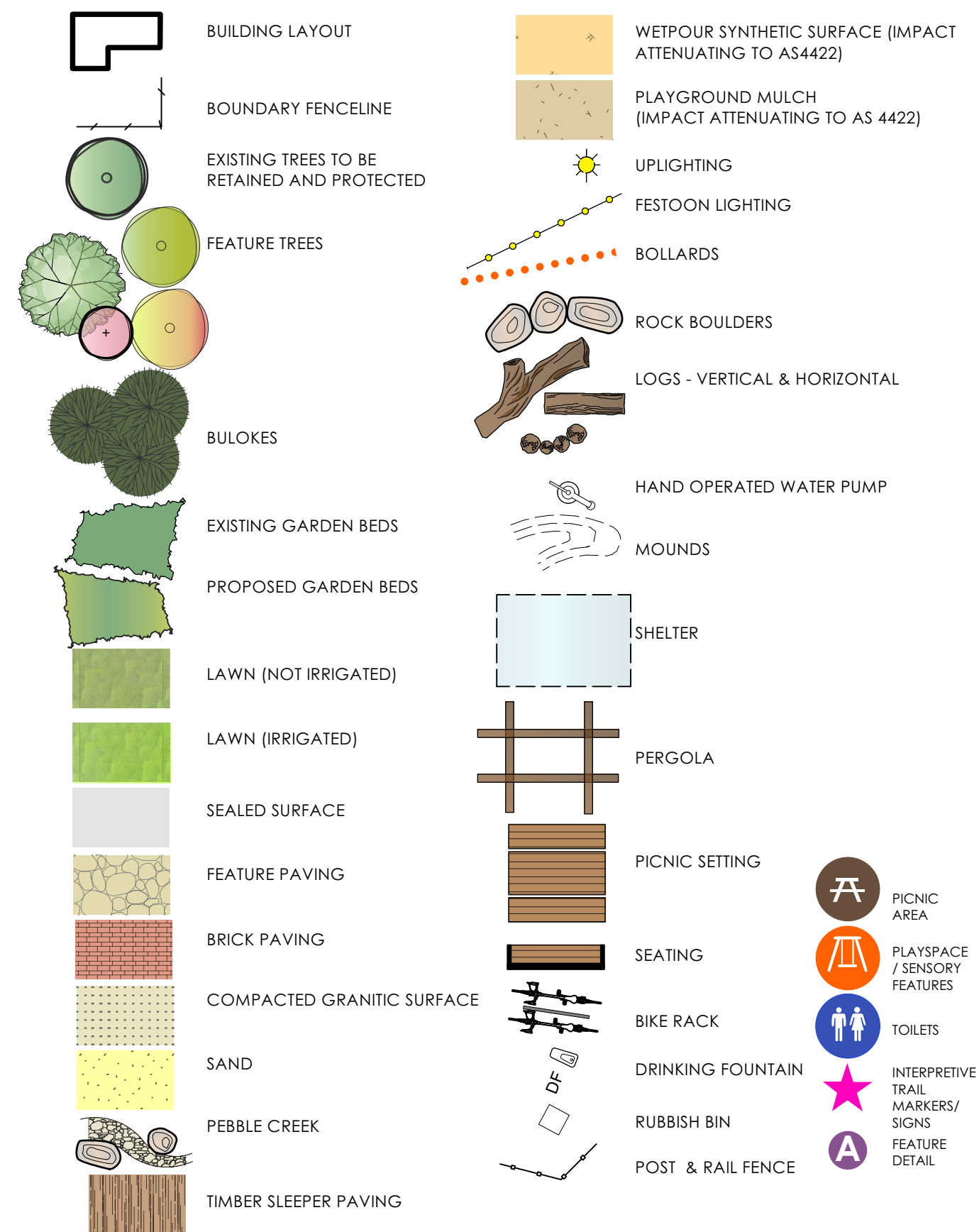


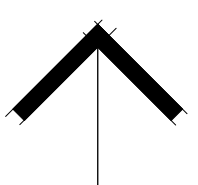


LEGEND



Marnoo Township Raluana Road to Street Connection KEY RECOMMENDATIONS FOR DESIGN PRINCIPLES

- E BELL TOWER & 100 YEAR TOWNSHIP MEMORIAL**
Retain existing features. Replace missing bell. Increase pedestrian zone to protect and enhance bell tower and memorial. Incorporate lighting, seating and granitic gravel paving for accessibility. Extend planted area with granitic mulch and indigenous low growing planting of the local EVC. Support views north south through selective pruning.
- F PEDESTRIAN CONNECTION**
Retain and protect existing trees and provide defined pedestrian and vehicle access. Provide permanent water and power supply for food van or similar. Pergola and lighting over pathway with occasional seating or picnic settings
- G CENTRAL MEDIAN PARK**
Provide accessible pathway connections. Re-align drainage swale and plant with indigenous vegetation. Provide a variety of seating and resting options. Support bus stop infrastructure. Shade trees to provide a cooling summer environment. Solar powered lighting along pathways. Continue interpretive trail and connection to context.



1:250 @ A1

0 2.5 5.0 7.5 10.0 12.5m

Landscape Master Plan - Crossover to Park Road Marnoo Streetscape Beautification

MARNOO VICTORIA 3387

25.10.2022
PN 238

PO Box 765 HORSHAM VIC 3402
041 041 2440
felicity@laimiga.com.au

Note: This is a concept design drawing and not a working drawing. It is not to be used for construction purposes. Levels and dimensions are approximate only. This drawing remains the property of the Landscape Architect. COPYRIGHT LAIMIGA DESIGN STUDIO

FOR COMMENT

