
29 January 2025

Dear Community Member,

Watta Wella Renewable Energy Project – Community Information Sessions

I'm pleased to provide an update on the Watta Wella Renewable Energy Project.

Since our last update, the Project team has been continuing with preparation of the Project's Planning Permit Application and Environment Report for submission to the relevant Government Departments.

Project design and project impacts

Thank you to those who have provided feedback on the Project. This feedback, along with a number of constraints such as traffic, noise, visual, socio-economic and ecological impacts, has been used to inform further changes to the Project layout, as shown in the attached map, including:

- Relocation of the Battery Energy Storage System (BESS) away from Landsborough Road, towards Bulgana Terminal Station.
- Complete removal of access requirements along Vineyard Rd. All primary traffic will now access the project site via Landsborough Road, via one of two main site entries or two secondary access points.
- Relocation of a number of turbines based on various constraints including ecological, shadow flicker and avoidance of communication links.
- Relocation of western concrete batch plant away from Vineyard Road.
- Reduction in construction disturbance corridors and associated ecological impacts.

Further design refinements may be required following planning approval.

Please see updated project information sheet attached and map which shows the new project layout. More information is also available via the project website - <http://wattawella-renewableenergy.com.au/>

Community Information Sessions

We will be holding community information drop-in sessions at North Park Community Sports Centre, on 14 and 15 February for community members to come along and meet the project team, learn more about the project and enjoy some delicious catering from Waacks Bakery.

**Venue: North Park Community Sports Centre – Function Hall
Lamont Street, Stawell**

Dates: Friday 14 February – 2pm – 6pm

Saturday 15 February – 10am – 2pm

Community Consultative Committee

As the project moves to submit its Planning Application, RES invites Expressions of Interest from community members to participate in a Community Consultative Committee (CCC) for the project. Once the project has been approved, the CCC will represent community and work with the Project Team to facilitate open communication and structured discussion about the next phase of development, construction and early operations of the project, including possible wider benefit sharing opportunities.

To provide feedback on benefit sharing programs and express interest in participating in the CCC please see our survey here - <https://www.wattawella-renewableenergy.com.au/benefits/>

Alternatively, you can contact us via the below details at any time –

Email: info.wattawella@wattawella-renewableenergy.com.au

Phone: 0484 024 727 (Marton Kalocsay – Development Project Manager)

0420 475 046 (Bernadette Holland – Partnerships Manager)

We look forward to chatting to you soon.

Yours sincerely,

Marton Kalocsay

Development Project Manager

Marton.Kalocsay@res-group.com

M +61 484 024 727

Watta Wella Renewable Energy Project

PROJECT UPDATE - FEBRUARY 2025



In planning for Australia's clean energy future, RES acknowledges its rich history.

We pay our respects to the Wotjobaluk, Jaadwa, Jardwadjali, Wergaia and Jupagalk Peoples as the Traditional Custodians of the Country on which the Watta Wella Renewable Energy Project is proposed.

We recognise their ongoing connection to land and waterways, and pay our respects to their Elders past and present.



360MW
wind farm



400MW
storage capacity



\$600M approx
local investment



up to 200,000 HOMES
supplied with
electricity



\$10M approx
community
benefit



200 approx
direct jobs

PROJECT OVERVIEW

The Watta Wella Renewable Energy Project will consist of a co-located wind farm and battery storage system. The Project is proposed on 4850 hectares of land approximately 16 km north-east of Stawell, Victoria.

Strategically located along the existing 220kV transmission line, the Project will connect into the Bulgana Terminal substation. The Project will connect to the national grid following the Western Renewables Link Project, which is currently scheduled for completion mid 2027.

Following the submission of Federal and State Referrals in August 2022, an Environment Report is currently being prepared, along with the Planning Permit Application, for submission in mid 2025. As part of this process and following consultation with community members, a number of turbines have been relocated to avoid impacts to threatened species and native vegetation.

PROJECT LOCATION

The site for the Watta Wella Renewable Energy Project has been selected for its excellent wind resource, proximity to existing grid infrastructure and favourable topography. The site is currently used for agricultural activities including, dryland mixed farming of sheep, cattle grazing and cropping.

Much of the project site has historically been cleared of native vegetation and has reduced ecological value. It is anticipated agricultural activities will be able to continue following the construction of the Project.

PROJECT TIMELINE



**ENVIRONMENT REPORT AND
PLANNING PERMIT APPLICATION
SUBMITTED - MID 2025**



**GRID CONNECTION
APPROVED - MID 2027**



**CONSTRUCTION
COMMENCEMENT - LATE 2027**

**Note: Timing is reliant on AusNet's Western Renewables Link Project and may change if there are delays to AusNet's program.*



Watta Wella Renewable Energy Project

PROJECT UPDATE - FEBRUARY 2025



WHO WE ARE

RES is the world's largest independent renewable energy company, active in 24 countries around the globe. Establishing operations in Australia in 2004, RES leveraged global knowledge and talent to develop projects in the early phases of the renewable energy industry in Australia, including Taralga Wind Farm in New South Wales, Ararat Wind Farm in Victoria and Emerald Solar Farm in Queensland. More recently, RES has successfully developed Murra Warra Wind Farm in Victoria and Dulacca Wind Farm in Queensland.

COMMUNITY CONSULTATION PROGRAM - HOW YOU CAN BE INVOLVED

Consultation for the Project has been ongoing since 2022. Community input and feedback has informed a number of changes to the Project layout, engagement approach and benefit sharing. Opportunities for community participation and feedback will continue throughout each stage of the planning and assessment process.

If you would like to receive further information on the Project or would like to arrange a time to meet with the Project team, please contact us on the details below or come along to one of our community information sessions in February.

RES has engaged Umwelt (Australia), leading environmental and social consultants, to assist with the Planning Permit Application for the Project, which will cover a range of assessments.

The Social Impact Assessment (SIA) will address matters of importance to the community by understanding the views, issues, interests, and concerns in relation to the Project, as gathered through community consultation.

COMMUNITY INFORMATION SESSIONS



North Park Community Sports Centre
Function Hall, Lamont Street, Stawell



- Friday 14 February 2025
2:00pm - 6:00pm
- Saturday 15 February 2025
10:00am - 2:00pm

BENEFITS

RES is committed to supporting the regional communities that host our renewable energy projects. We are seeking feedback from the community to understand local needs and preferred options for the Project's benefit sharing programs, which will contribute approximately 10 million to the surrounding community over the life of the Project.

During the construction period, it is expected that the project will generate approximately 200 approx direct jobs, with up to 20 full time staff also being required throughout the 20+ year operation and maintenance phase of the project.

Employment benefits from the project can extend through local supply chains to fuel/water supply, vehicle servicing, uniform suppliers, hotels/motels, B&Bs, cafés, pubs, catering and cleaning companies, tradespersons, tool and equipment suppliers and many other businesses.

We are also inviting expressions of interest from local businesses that could service the project.

The Watta Wella Renewable Energy Project will generate renewable energy to power up to 200,000 Victorian homes and offset up to 1 million tonnes of CO₂, contributing to the Victorian Renewable Energy Target of 65% renewables by 2030 and the long term target of net zero emissions by 2050.

BENEFIT SHARING SURVEY

RES is committed to giving back to the communities that host our renewable energy projects.

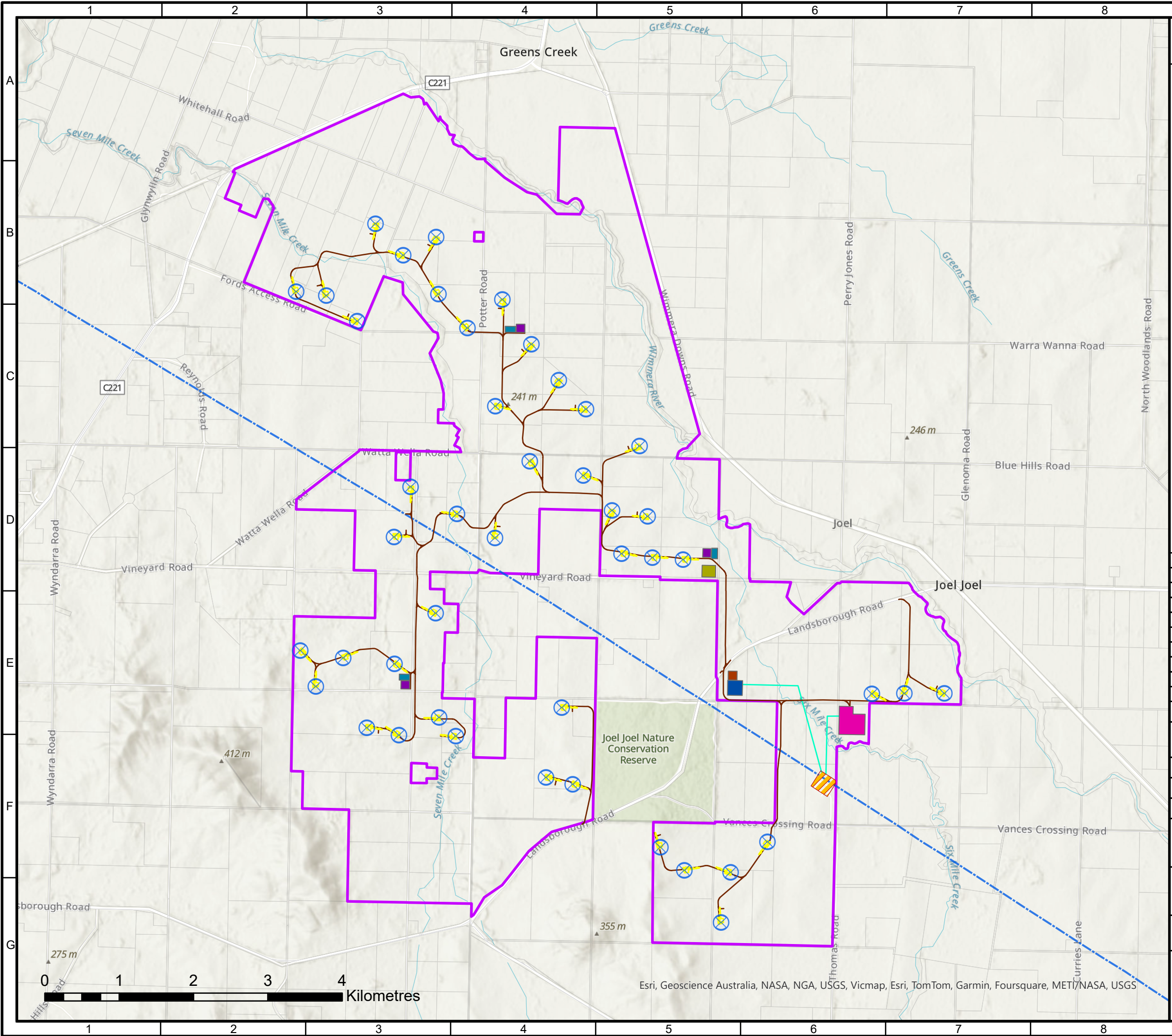
Please scan the QR code with your phone or tablet camera to have your say about how benefits should be shared with the local community.



CONTACT THE TEAM

☎ 1800 118 737 🌐 wattawella-renewableenergy.com.au

✉ info.wattawella@wattawella-renewableenergy.com.au



Source Data © State of Victoria (Department of Environment, Land, Water and Planning).

LEGEND

- TURBINE LAYOUT
- SITE BOUNDARY
- BULGANA TERMINAL STATION
- ACCESS TRACK
- HARDSTANDS
- INDICATIVE OVERHEAD TRANSMISSION LINE - 220KV
- EXISTING OVERHEAD TRANSMISSION LINE - 220KV
- CONCRETE BATCH PLANT
- CONSTRUCTION COMPOUND
- LAYDOWN AREA
- OPERATION AND MANAGEMENT COMPOUND
- PROPOSED BESS
- SUBSTATION AREA

NOTE: LOCATIONS AND DIMENSIO S ARE INDICATIVE AND SUBJECT TO DETAILED DESIGN

| | | | | | |
|------------|-------|----------|------|----------|----------------------------|
| 9 | MZ | 23/01/25 | MK | 23/01/25 | UPDATE INFRASTRUCTURE |
| 8 | AG | 26/09/24 | AP | 10/10/24 | UPDATE INFRASTRUCTURE |
| 7 | MZ | 17/01/24 | MK | 17/01/24 | UPDATED INFRASTRUCTURE |
| 6 | OC | 19/07/22 | MK | 19/07/22 | CHANGE |
| 5 | OC | 14/06/22 | MK | 14/06/22 | CHANGE |
| 4 | KH | 16/03/22 | CM | 16/03/22 | INFRASTRUCTURE UPDATE |
| 3 | EC | 20/01/22 | CM | 20/01/22 | UPDATE INFRASTRUCTURE |
| 2 | JT | 26/07/21 | NK | 26/07/21 | SOLAR AND BESS AREAS ADDED |
| 1 | RD | 12/2/20 | NK | 12/2/20 | FIRST ISSUE |
| ISSUE | DRAWN | DATE | APPD | DATE | REVISION NOTES |
| LAYOUT DWG | N/A | | | | LAYOUT NO. PAUSplc098 |

DRAWING NUMBER
04372-RES-MAP-DR-SV-004

COORDS
GDA 1994 MGA Zone 54

PURPOSE
PRELIMINARY

| | | | |
|-------|----------|--------------------|----|
| SCALE | 1:50,000 | ORIGINAL PLOT SIZE | A3 |
|-------|----------|--------------------|----|

PROJECT TITLE
WATTA WELLA WIND FARM

DRAWING TITLE
INFRASTRUCTURE PLAN

THIS DRAWING IS THE PROPERTY OF RES AUSTRALIA PTY LTD
AND NO REPRODUCTION MAY BE MADE
IN WHOLE OR IN PART WITHOUT PERMISSION

Suite 6.01 Level 6,
165 Walker Street,
North Sydney, NSW 2060
info-australia@res-group.com